

AN OVERVIEW OF THE FINANCIAL SUMMARY

FOR THE CHURCH OF SWEDEN, NATIONAL LEVEL

2011 REVIEW AND FINANCIAL SUMMARY
FOR THE CHURCH OF SWEDEN, NATIONAL LEVEL

CONTENTS

The Archbishop	4
The Secretary-General	7
About the Church of Sweden	9
Report of the Board	10
Green Accounts	24
How the Church of Sweden is run	28
The dioceses of the Church of Sweden	30
Financial Summary 2011	32
Income statements	33
Balance sheets	34
The Central Board of the Church of Sweden	36
For those of you who want to know more	38
Image gallery	39



PEOPLE OF THE CHURCH

and the national church

WHAT GRIPPED US WAS what and who lived in the Church. We have inherited the Church so that we can equip ourselves and each other for life – and for death. Heritage is only of interest to future generations when it is clearly important to people.

We call ourselves a national church. It is only of interest if people go to church. But they will become marginalised if they do not associate with the whole of society and live with its concerns and hopes. A national church must not differentiate between people.

Despite secularisation, we can see how close the Church is to the people. Secularisation partly stems from the Christian faith. It has been strengthened by the Lutheran tradition's emphasis on individuals taking responsibility for the whole of their own lives – and for their relationship with God. The idea of separating church and state also emerged from Christian foundations. This means that we live in a country where the heritage of our faith is largely invisible and goes unnoticed, which leaves the national church vulnerable.

Medlem 2010 (Member 2010) is a survey about people's approaches to faith and to the Church of Sweden. When I read extracts from it, I am struck by the fact that many seem to think that the Church should strive to be infallible and theocratic. This is what a 'real' church should be like, it would

seem. The Church's own authoritarian approach in times past has probably not lessened people's expectations about such ambitions either.

What keeps the Church and parishes alive is that people have been seen, moved and uplifted. It is the message that God sees

“What keeps the
Church alive is people
being touched by
God's words.”

us, wants the best for us, accepts us and promises to accompany us on our path. “I am with you always, to the end of the age” – a greeting from Jesus, have been uttered at each individual's baptism. The Church is also kept alive by God yearning for us to find our way, get help in our struggle against selfishness, be granted forgiveness and start afresh.

The Church of Sweden is regularly criticised about how we make decisions. Many people think there is too much democracy. It is as if people believed that things would

be better with a theocracy or 'priestocracy'.

What keeps the Church alive is people being touched by God's words. Experts often know more, but they are probably not moved more.

The question of who is to make decisions in the Church of Sweden is one of theology. Who does God care about, and who can God influence? These are the people who must make the decisions.

We believe in God – the Father, the Son and the Holy Spirit. That is why we believe that everyone who exists does so because God has given them life and upholds them. And God can influence the conscience and sense of justice of all people who are able to put themselves in another person's shoes, whether they are Christian or not. Also, everyone, whether they believe in God or not, should take responsibility themselves and think of the consequences of their actions.

However, those who live with the biblical texts and are borne by, bear and influence tradition – which all active Christians do – naturally gain more perspectives on, more knowledge of and more insight into Church life. They are moved by grace and fellowship, being seen and counted upon, despite not being at the top of the social ladder. Only through such people can the Church maintain its vitality, as this vitality comes above all from the Gospels.

Everyone has a relationship with God, so all members are entitled to take part in making decisions in the Church of Sweden. No member can be excluded. Democracy must be supplemented by expertise, insight and loyalty among those who have pledged to serve as deacons, priests and bishops in this Church. There are issues that priests and bishops decide on themselves. In matters of doctrine the bishops have had a significantly stronger position in synod for some time. But the foundation is governance by members on the basis of baptism – because we believe this is for the best.

The preamble to the Church Ordinance describes characteristics of the Church of Sweden.

- Our church is based on the heritage of the apostles (who in turn were part of a Jewish context)
- It is governed jointly by members, bishops and priests.
- Structure and rites change over time.

It also states that “Since Christianity came to Sweden, people have gathered in parishes for worship, consultation and decisions on joint matters”.

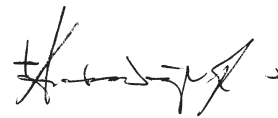
What is a national church without decision makers who are – and are permitted to be – ‘people of the church’, and who feel that they are made use of? What will be the Church’s contribution to the present if the core, the stories, the sense of being moved and the thankfulness for all of this do not affect decision making?

In all our parishes, at diocesan offices and at joint national level, we face the challenge of vitalising the national church. To move and be moved, to re-educate people in the basics of the Christian faith, to explain and deepen our worship, to work on creating fellowships in which people find trust and healthy self-esteem. We have the tools. But do we have the passion?

Each church must have members who wish to share their hope and thankfulness. Let

those of us who are members of the Church be bold enough and allow one another to take responsibility as ‘people of the church’ and as ‘people of the national church’.

There would not have been any loaves or fishes for the huge crowd if that boy had not opened his bag, which contained so pitifully little. But open it he did.



Anders Wejryd
Archbishop
and Chair of the Central Board
of the Church of Sweden.

COOPERATION

another word for 'together'

THE CHURCH OF SWEDEN IS a national and regional organisation, but first and foremost it is a local one. We perform our task of being a church in the local context. This is where the parishes are to convey to people the Gospel of Jesus Christ's existence. The Church of Sweden is Sweden's biggest popular movement, with 6.5 million members. The fundamental task of the Church is expressed in the local sphere, where people come together to worship, get involved in Church activities and find fellowship, and elected representatives and volunteers work in and for their own parishes. The activities are multifaceted, differing from place to place and between dioceses. This is how it is – and should be – when a wide range of people bring their experiences of faith, life and commitment to the contexts of the Church of Sweden.

LIVING THEOLOGY

It is important for the Church to have a living theology. We are looking after a heritage spanning several thousands of years – in the here and now.

The message has remained the same throughout the ages, and we have our children baptised because Jesus said we should. One of our tasks is to educate those who have been baptised, as it is important to be aware of the context you are a part of. Tra-

dition lives and takes shape within us, and it speaks to us from the past while conveying us into the future.

God seeks out each one of us exactly where we are, and in that sense theology is everyone's common property. Although this means that we are given authority, we are not left without a point around which to orient ourselves.

“We are managing a heritage spanning several thousands of years, but in the here and now.”

When we listen to someone talking about their faith, we can see the Gospel through another person's eyes. We see the present from new angles that we would not have been able to discover ourselves. Faith must never be something that is left to experts. When Christian faith means something in a person's life, with its highs and lows, choices and routines, God is at work. We can get an insight into the meaning of life in our dealings with each other.

Through the Church of Sweden's communication, people are to be given the opportu-

nity to encounter an open and living church that is a sign of God's presence and in which the basis for all hope is trust in God. Today, communication is one of several areas of expertise, and the challenge for the Church of Sweden is to be heard among all the other voices in society. Our ambition is to be heard through the noise as the voice of God.

Changes in society and the world affect the Church at all levels. Now that the Church of Sweden is facing challenges in the form of altered economic conditions, there is a greater need to review our activities, administration and management. In an organisation consisting of 788 units with their own responsibility for activities, finances, staff and buildings, the issue of how to cooperate more in the areas that lend themselves to this, for example administration and management, becomes ever more pressing.

The Church's ability to serve as a church in local activities with its members and the surrounding community is dependent on resources being available and used efficiently. Church activities are and must be specific and relevant to each parish, as the conditions, possibilities and contexts vary from one parish to another. The support necessary in terms of IT systems, administrative solutions, telephony and payroll systems can, however, be merged into a joint function to a greater extent than it is today.



DIRECTED PARISH GRANTS

By clearly prioritising greater collaboration within the Church of Sweden, the Central Board of the Church of Sweden has given reason to reflect in more detail on the importance of these issues. The dioceses have stressed the significance of the national level taking greater responsibility. Through the General Synod's decision on directed parish grants for 2011 and 2012, financial resources have been allocated. This provides a solid foundation for further development work.

All dioceses are part of ongoing processes regarding collaboration, and development work is under way in all of them. When allocating directed parish grants, the dioceses are prioritising collaboration on a joint IT platform, accessibility/telephony through a joint telephony platform, and administrative systems and property management. A review of administrative systems has also been initiated, covering systems and special projects in finance/payroll, property and document management.

Each parish and association of parishes decides for itself how collaboration with other units is to be structured. The diocesan and national levels collaborate in order to offer methods, solution proposals and forms of collaboration. Local autonomy is important.

Presence, openness and hope are the key values in the Church's communication work. The hope is that people will see that we are a church that reflects God's presence and openness, and God as the foundation of all hope. We are all part of something greater. Together, we can be a church that people have a positive relationship with and feel happy to be a part of.

Helén Ottosson Lovén
Secretary-General

SUSTAINABLE DEVELOPMENT

The Church of Sweden views the ethical perspective as an integral part of work on sustainable development, which is reflected in our financial policy, which was adopted by all dioceses by the end of 2011. This is very pleasing and means that asset management is part of our lobbying work.

Sustainable development is often associated with the climate issue, but it concerns more than that. It is about fair economic structures and agriculture that does not deplete the Earth. Ethics and values are key elements of developing

new institutions and structures for policies and markets. This is something we bear in mind, not least in our contacts with our partners in the South.

One area of priority is to reduce travel, primarily air travel. Video conference meetings are being developed, and we are also trialling tablet PCs.

We work to GRI standards for environmental work; read more in the green accounts on page 24.

Technological developments provide us with new opportunities, not least in the field of telephony. We are increasingly

working together, which can chiefly be seen in our investment in a joint IT platform.

One future challenge is to reduce paper consumption. Another is to continue work on ethics in asset management by spreading the Ethos funds. We also wish to work towards a culture of environmental awareness among Church of Sweden employees, both in their work and in their private lives.

In terms of strategic direction, we aim to meet the needs and expectations of dioceses and parishes to an even greater extent.

ABOUT THE Church of Sweden



- The Church of Sweden is made up of 1,456 parishes in Sweden and 42 parishes abroad (2011). The task of the parishes is to hold church services, conduct training, and carry out mission and diaconia (welfare work).

- The Church of Sweden has just over 6.5 million members – just under 70 per cent of the population. The proportion of members in the Church's 13 dioceses varies between 60 and 80 per cent.

- In one year, just over 420,000 church services are held, with almost 17 million participants. A third of the services are baptisms, confirmations, weddings and funerals.

- One hundred thousand people of all ages sing in around 5,500 choirs.

- The number of churches and chapels owned by the Church of Sweden is 3,385, of which 2,955 are listed buildings. This number increased by 36 during the 2000s.

- The number of young people aged 0–19 involved in the Church of Sweden's drop-in activities for this age group increased from 1.5 million to 2 million during the 2000s.

- Almost 33,000 young people were confirmed in the Church of Sweden during the year.

- The Church of Sweden's international work raised a total of SEK 160 million. The Church received an additional SEK 131 million from mainly the Swedish International

Development Cooperation Agency (Sida) and the EU for its international initiatives.

- The work at the national level is mainly carried out at the Central Church Office in Uppsala by just under 300 employees. Just over 100 people work for the Church abroad.

- The Church has 22,000 employees and 35,000 elected representatives. In addition, many people are involved on a voluntary basis.

- Activities in the parishes are largely financed by the Church fee. Eighty-nine per cent of this fee goes to the local parishes, with 11 per cent going to the dioceses and the national level.

- The carrying amount (book value) of the Church of Sweden's collective assets was SEK 38 billion in 2010*. Some of these assets, such as securities, provide returns, while others, such as churches, are very costly. Capital is managed according to ethical principles, with a requirement for good yield.

**Data for 2011 will be available in June 2012.*

Report of THE BOARD

OUR TASK

The Evangelical-Lutheran faith community of the Church of Sweden accommodates a wealth of different activities that express the basic faith, creed and doctrine that the Church of Sweden stands for. The primary unit is the parish, whose basic task is to hold church services, educate and carry out diaconia and mission work. Regionally, the Church of Sweden takes the form of dioceses, whose task it is to promote and supervise parish life.

The national level, whose activities this Review and Financial Summary describes, is in charge of the Church's joint affairs. This applies to intra-Church standards, review of decisions, joint information, education and training, consultation, ecumenical relationships, and international diaconia and mission work. The task also includes acting as the voice of the Church in the public arena, in Sweden and internationally.

THE ORGANISATION

Activities at national level are conducted in the registered Church of Sweden Faith Community. The highest decision-making body is the General Synod, whose 251 representatives meet each year. The General Synod appoints a Central Board for a four-year period. It is chaired by the Archbishop. The Central Board of the Church of Sweden is the Church's highest responsible body when the General Synod is not in session. It leads and coordinates the management of the tasks carried out by the national level. The Central Board deals with issues as stated in the Church Ordinance, decides on all general and day-to-day issues at national level and represents the Church of Sweden. The Central Board is the General Synod's drafting and executive body, which means that it is able to put forward proposals on various issues through written communications to the General Synod. It also carries out the tasks set by the General Synod.

When deciding on how to prioritise the national level's various tasks, the Central Board has identified a need to consider how col-

laboration with and support to the dioceses should be structured. In 2011, discussions and consultation with the Diocesan Boards took place to address the challenges faced by the Church of Sweden and thus lay the foundation for work on strategic issues and planning activities.

Bodies also directly appointed by the General Synod are the Doctrinal Commission, the Bishops Disciplinary Committee, the Election Supervisory Committee, the Appeal Committee, the Committee for Education, Research and Culture, the Committee for International Mission and Diaconia, and the Committee for the Church of Sweden Abroad. (As of 1 January 2012: Council for the Church of Sweden Abroad.) The Central Board appoints the Asset Management Council and Sami Council within the Church of Sweden to deal with specific areas. The Central Board is responsible for all overall activities, but a committee or council may have a deciding influence in certain specific issues. The Central Church Office in Uppsala is organised into seven departments and two secretariats that carry out activities at national level. Each section is led by a section head, and activities may be linked to one or more governing bodies (committees or councils) in addition to the Central Board. The work of the Central Church Office is led by a Secretary-General.

THE GROUP

The Church of Sweden's national level constitutes a group that, in addition to the parent company, consists of the management company Svenska kyrkans förvaltningsaktiebolag and the dormant education and training subsidiary Svenska kyrkans utbildningsaktiebolag. Svenska kyrkans förvaltningsaktiebolag owns and manages the Fjärdingen 15:2 property in Uppsala, which meets the main part of the Central Church Office's requirement for office premises. The associated companies Fairtrade Sverige AB and Berling Media AB are included in the consolidated accounts.

THE YEAR UNDER REVIEW

GENERAL SYNOD 2011

The General Synod, which is the Church of Sweden's highest decision-making body, met in Uppsala for two autumn sessions. In the presence of HRH Crown Princess Victoria, the General Synod was opened on 27 September by chairman Gunnar Sibbmark. It had received 98 motions from representatives and 7 communications from the Central Board. The matters raised included issues concerning children and young people, the Church of Sweden Abroad, and the appointment of marriage officiators.

ORDER OF WORSHIP

A thorough revision is under way of *Den svenska kyrkohandboken del I* (Part I of the Swedish Order of Worship), which contains orders of service for morning service, baptism and marriage services, for example. This work has been commissioned by the Central Board and includes safeguarding vibrant local worship and the Church of Sweden's common expressions of faith. The proposed Order of Worship will be trialled by every fifth parish in the Church of Sweden, from the first Sunday in Advent in 2012 to the Sunday before Advent in 2013. The final proposal will be discussed by the 2015 General Synod.

Theologians, authors, musicians, the Bishops' Conference and representatives from the General Synod's nomination groups took part in the work on the Order of Worship in 2011.

Official meetings and travel

MEETINGS WITH THE COUNCIL FOR CONTACTS WITH RELIGIOUS COMMUNITIES IN MARCH AND DECEMBER

The Swedish Government's Council for Contacts with Religious Communities had two ordinary meetings in 2011. In addition, the council invited the communities to a knowledge seminar, at which Stefan Attefall, Minister for Public Administration and Housing, presented his thoughts on the council's function in the future. The council also discussed how its role could be developed and emphasised its significance as a reference group.

MEETING WITH THE COMMITTEE ON FOREIGN AFFAIRS IN MAY

In May 2011, a representative of the Church of Sweden's national level, together with other heads of Swedish organisations that have framework development cooperation agreements with Sida, the Swedish International Development Cooperation Agency, gave a presentation to the members of the Swedish Committee on Foreign Affairs about the view of those organisations on current aid issues in Swedish and European development policy.

SWEDISH ARMS EXPORTS AND HUMAN RIGHTS

The events in Egypt and Tunisia at the start of 2011 led Archbishop Anders Wejryd to draw attention to the issue of Swedish arms exports to countries in which serious violations of human rights occur.



In September 2011, the Church of Sweden's 14 bishops stood united behind an interfaith declaration of support for an international arms trade treaty within the UN.

More information is available at controlarms.org.

ALMEDALEN WEEK

Several of the Church of Sweden's representatives took part in debates and interviews at the 2011 Almedalen Week political forum, both during seminars and in the media. The Church of Sweden organised more than 30 seminars and events that attracted over 2,500 visitors.

The 'Nicodemus talks' in Visby Cathedral were well attended and were also given media coverage. Leading representatives of Sweden's parliamentary parties took part in these talks.

PEOPLE DENIED SICKNESS INSURANCE COMPENSATION

The bishops of the Church of Sweden stood unanimously behind the National Christian Council of Sweden's open letter sent to the Swedish government in March 2011. The letter made several demands for rapid changes in the sickness insurance system to ensure that no further individuals or families would be struck by economic and social hardship.

Deacons in several dioceses, including Visby and Västerås, have started appeals and petitions against the severe regulations that prevent people from qualifying for sickness insurance compensation.

SURVEY ABOUT THE MEANING OF CHRISTMAS

According to a survey that market researchers Sifo carried out on behalf of the Church of Sweden, one in three Swedes (29 per cent) find that their mood deteriorates during the Christmas rush. The same number think that buying presents is the most stressful part of Christmas. *"This shows that we should reflect on why we celebrate Christmas and what we want it to be. It is actually supposed to be about togetherness and sharing, but Christmas has been kidnapped by commerce,"* commented Archbishop Anders Wejryd. As an alternative, the Church of Sweden produced a symbolic 'goody bag' for SEK 100, containing 'items' such as fruit trees and schooling opportunities, to give people in developing countries the opportunity to get enough to eat, break out of poverty and create a more secure life for themselves.

THE ARCHBISHOP'S INTERNATIONAL TRIPS

One of the Archbishop's tasks is to represent the Church of Sweden in meetings with other churches.

- 16–22 February, Geneva, meeting of the Central Committee of the World Council of Churches.
- 30 April–1 May, Rome, for the beatification of John Paul II.
- 10–16 September, Addis Ababa, meeting of the Executive Committee of the World Council of Churches.
- 3–5 October, Cardiff, for a meeting of European Archbishops.

- 9–17 November, delegation to Tanzania and the Lutheran Church.
- 25–28 November, Durban, participated in the Interfaith Climate Summit in connection with the UN Climate Change Conference.

OFFICIAL VISITS TO THE ARCHBISHOP

- Bishop S Harris with a delegation from the Lutheran Church in Liberia. (February)
- Ambassador Daniel Smith, Namibia; ambassador Sophonia Makgetla, South Africa; ambassador Anne Mtambo, Zambia; ambassador Bernadette Rathedi, Botswana. All from SADC, Southern African Development Community. (February)
- Stefan Attefall, Minister for Public Administration and Housing. (February)
- Bishop Dr Solomon Rajah from the Lutheran Church in Malaysia. (March)
- Secretary-General Viorel Ionita from CEC, the Conference of European Churches. (April)
- Bishop Katherine Jefferts Schori with a delegation from the Episcopal Church in the United States of America. (May)
- President Nikolaus Schneider with a delegation from the Evangelical Church in Germany. (August)
- Secretary-General, Father Silvester Arinaitwe, from the Uganda Joint Christian Council. (October)
- Ambassador Hala Husni Fariz, Palestine. (December)
- Nobel Peace Prize laureate Leymah Gbowee, Liberia. (December)
- President Helga Haugland Byfuglien, and Christofer Solbakken, Secretary-General of the Bishops' Conference, Church of Norway. (December)

The Church of Sweden's bishops

NEW BISHOPS

The Church of Sweden gained three new bishops in 2011. On 6 March, Martin Modéus and Sven-Bernhard Fast were ordained bishops of Linköping and Visby dioceses respectively. On 4 September Per Eckerdal was ordained bishop of Gothenburg diocese. The ordination services in Uppsala Cathedral were led by Archbishop Anders Wejryd.

NEW BISHOPS' DOCUMENT ON BAPTISM

During the autumn, *Leva i dopet. Brev från biskoparna till Svenska kyrkans präster och församlingar (Live in baptism. A document from the bishops to the Church of Sweden's priests and parishes)* was issued. The document states reasons to get baptised. It can also be read by those considering having their child baptised – or perhaps getting themselves baptised. 15,000 copies of the document were printed. It is also available (in Swedish) on the Church of Sweden's website: www.svenskakyrkan.se/biskopsmotet

SWEDISH BISHOP AT EU MEETING

The annual meeting between religious leaders and representatives of European institutions was attended by both José Manuel Barroso, President of the European Commission and Bishop Antje Jackelén from the Church of Sweden. The bishop took part on behalf of the Archbishop and highlighted issues including how to counteract the destructive consequences of individualism.

Ecumenical contacts

PORVOO CONSULTATION ON THE VIEW OF MARRIAGE

In November, a consultation took place on the view of marriage within the Porvoo Communion in Turku, Finland. It was brought about by the Church of Sweden's decision to open up for same-sex marriages. In addition to lectures on marriage and gender issues, the consultation focused on discussions over confessional boundaries in order to understand different contexts, theological methods and approaches. The Porvoo Communion was created in the mid 1990s through an agreement between the Lutheran churches in the Nordic and Baltic regions and the Anglican churches in the British Isles. By signing the agreement, the churches pledge to recognise each other's interpretation of faith and ordained ministries, and to receive each other's members as their own.

SWEDISH THEOLOGICAL INSTITUTE

The Swedish Theological Institute is the Church of Sweden's institute for studies and religious dialogue in Jerusalem. It celebrated its 60th anniversary in April with an academic conference. The Institute originated from the work of the Swedish Israel Mission in Vienna during the Second World War. In 2011 a number of courses and training programmes were held for parish councils, teachers, theologians, priests, journalists, youth leaders, culture practitioners, and others.

GEMENSAM FRAMTID – A NEW FAITH COMMUNITY

In 2011 the Mission Covenant Church of Sweden, the Methodist Church of Sweden and the Baptist Union of Sweden formed a new faith community with the working name of Gemensam framtid (Common Future). During the year, a working group containing representatives from the Church of Sweden and Gemensam framtid discussed how local cooperation could be structured in the near future. At the end of the year, Gemensam framtid presented a formal request to the Central Board of the Church of Sweden about talks on this forthcoming relationship. These talks will begin in 2012.

WORLD COUNCIL OF CHURCHES

The World Council of Churches (WCC) organised the International Ecumenical Just Peace Convocation in May 2011 in Kingston, Jamaica. A thousand people from one hundred nations took part, of which 95 were youth delegates. The work performed during and the results of the WCC's Decade to Overcome Violence (2001–2010) were highlighted. A statement was also made that rejected all





use of nuclear weapons and advocated efforts to make war illegal. The delegation was led by Archbishop Emeritus KG Hammar.

The Church of Sweden has been a member of the WCC since its foundation in 1948. The WCC is currently the umbrella organisation for 349 member churches in 110 countries, representing 560 million people in the Orthodox, Reformed, Lutheran and Anglican families of churches. Archbishop Anders Wejryd is on the Central Committee as well as on the Executive Committee of the WCC. The Church of Sweden is a major member church in the WCC and an important financier through its membership fee and programme grants.

LUTHERAN WORLD FEDERATION, GLOBAL STRATEGY 2012–2017 – WITH PASSION FOR THE CHURCH AND FOR THE WORLD

In 2011, the 145 member churches jointly drafted a strategy for the work of the Lutheran World Federation (LWF) in 2012–2017. This strategy formulates a joint international understanding of what it means to be an Evangelical Lutheran today, and what specific consequences this has for our mission in the world.

The LWF's lobbying of political institutions is being given greater priority and is based to a greater extent on welfare work (diaconia) and the theological reflection that LWF performs.

The Church of Sweden has been a member of the LWF since the Federation's foundation in Lund in 1947. The LWF has 145 member churches in 79 countries, with a total of 70 million members. Bishop Antje Jackelén represents the Church of Sweden on the Council. Through its membership fee and grants to the LWF's programmes, including the major international aid project, the Church of Sweden is one of the LWF's biggest financiers.

ACT ALLIANCE ADOPTS STRATEGIC PLAN

In 2011, the Church of Sweden, one of 125 members of the ACT Alliance (Action by Churches Together), contributed to the Alliance's first strategic plan. The Church of Sweden's special grants aim to bolster the psychosocial approach and support work in disaster situations.

International work

HUMANITARIAN INITIATIVES

Haiti

During 2011 the Church of Sweden continued to provide financial support to the ACT Alliance's reconstruction work after the Haiti earthquake. From having focused on providing acute disaster support, the work increasingly shifted in 2011 towards rehabilitation and long-term initiatives. Since the disaster took place in January 2010, the Church of Sweden has funded disaster and reconstruction efforts in Haiti with over SEK 17 million.

The Horn of Africa

In the summer of 2011, images from the famine in the Horn of Africa filled the media. The Church of Sweden's international mis-

sion and diaconia already had a presence there, and has long provided support for long-term efforts to reduce poverty in rural Ethiopia. Through the ACT Alliance, the Church of Sweden expanded its support to those struck by the drought. Around 285,000 people have been directly affected by these initiatives. The Church of Sweden's fundraising efforts for the Horn of Africa have brought in SEK 10 million.

Sudan

On 9 July 2011, South Sudan became an independent state. The Sudan Council of Churches, with which the Church of Sweden has a close relationship, worked actively for this independence. At the referendum in January, the majority wanted to divide up the country, and unrest spread in the border area. The Church of Sweden attempted to raise awareness of the crisis in Sweden and provided support for disaster relief for those affected by the conflicts.

Developments in the Middle East and North Africa

Unrest in Libya caused many people to flee in the spring of 2011. The Church of Sweden's international mission and diaconia provided support to refugees in the camps along the border with Tunisia. It also sent three psychosocial experts to work in Tunisia and Egypt to bolster our partners in the ACT Alliance.

Along with the Churches' Commission for Migrants in Europe, the Church of Sweden has also backed statements criticising the EU's unwillingness to accept refugees who have made their way to Europe from North Africa.

CLIMATE NEGOTIATIONS

A climate summit was held in Bonn in June under the leadership of the UNFCCC, the United Nations Framework Convention on Climate Change. The Church of Sweden was present, collaborating mainly through Aprove, a European lobbying network, to try to highlight the fairness and justice aspect in climate negotiations.

In December the major Climate Change Conference COP17 took place in Durban, South Africa. The representatives of the Church of Sweden were very active, now also as members of the Climate Action Network (CAN). Finally, the world's countries managed to agree on a roadmap so that a new climate agreement, encompassing all countries, will be in place no later than in 2015.

On the last weekend of November, the Archbishop visited South Africa and an Interfaith Climate Summit in connection with the UN's Climate Change Conference in Durban. The meeting was arranged by the African churches' We Have Faith climate campaign, along with the European Time for Justice campaign, in which the Church of Sweden is also involved.

DEVELOPMENT COOPERATION

A few examples of all the projects regarding development cooperation run by the Church of Sweden in 2011:

Human rights

In 2011 the Church of Sweden supported the Augusta Victoria Hospital's work in Jerusalem to give isolated Palestinians access to the care that all people are entitled to. One area that has been particularly highlighted is the work on breast cancer.

Project for sexual and reproductive health

HIV and AIDS are a key issue in several projects supported by the Church of Sweden, which are often about trying to counteract the stigmatisation of people who are HIV positive, but they also address how to reduce the spread of the disease in the future. The World Health Organisation, WHO, estimates that there are over six million HIV positive individuals in South-east Asia, with over 95 per cent of them being unaware that they are infected.

Young people as bridge builders between parishes in Sweden and the South

The Young in the Worldwide Church exchange programme is one example of a project involving church collaboration. During the spring of 2011, 10 exchange participants from Costa Rica, Brazil and Tanzania came to the Church of Sweden. The autumn of 2011 saw 14 Swedish participants sent out to the same countries and to the Philippines. A five-year evaluation shows that many participants have found their own relationship with the church, both in the Church of Sweden and in the worldwide church, during the exchange programme.

Sustainable development:

Sustainable development is about contributing to sustainable communities. It covers everything from climate and environmental issues to basic education, livelihoods and microloans. The Church of Sweden has supported coffee cooperative COOPCAB in Haiti for several years. Through the cooperative, farmers can receive payment before the coffee has been sold so that they can invest in their



farm or household immediately on harvesting, in a way that poor farmers are not normally able to do.

FUNDRAISING

The Church of Sweden's international work is chiefly financed through donations, various fundraising efforts and collections. The Church of Sweden Abroad also conducts fundraising work, both in Sweden and abroad. The Church of Sweden works actively with fundraising using professional methods, and applies the ethical guidelines produced by Swedish and international sector bodies. In 2011 a total of SEK 177 million was collected, of which the Church of Sweden Abroad's portion was SEK 13 million.

FUNDRAISING POLICY

The Church of Sweden's fundraising policy was adopted by the Central Board in October 2011. The policy's theological basis is that fundraising and sharing resources are central to the Christian faith. The policy states that fundraising is to take place in line with the Church of Sweden's values, follow the rules applied in the sector, and be based on respect for the donor. The fundraising policy applies to the national level and is offered to other levels.

Lent campaign 2011

Under the heading *ALLT för att utrota hungern* (EVERYTHING to eradicate hunger), this year's Lent campaign focused for the second year running on the theme of The Right to Food. It resulted in SEK 36 million being raised. The result for 2010 was SEK 42 million and for 2009 SEK 39 million.

Christmas campaign 2011

The Christmas campaign for 2011/12 was the last on the theme of *Nu tändas tusen juleljus* (A thousand Christmas candles are lit), which has run for three years. It focused on highlighting men's need for security in an insecure world. The campaign raised SEK 35 million. The result for Christmas 2010–2011 was SEK 36 million; for Christmas 2009–2010 it was SEK 39 million. One of the goals of the campaign was to hand out fundraising folders and boxes of matches to all church visitors during Advent and Christmas. Over 11,000 new donors were recruited, which exceeded the goal.

Fundraising for the Church of Sweden Abroad

A national fundraising and inspirational team coordinated fundraising efforts in the dioceses in 2011. Income from parish activities and wills has increased, while income from collections is dwindling. An equivalent group in the parishes abroad has started work on information efforts regarding wills, donations and corporate contacts.

COOPERATION WITH SIDA

The Church of Sweden has regular discussions with Sida, the Swedish International Development Cooperation Agency. During the year, extra applications to Sida have resulted in an additional SEK 147 million. Parts of this grant were already allotted to the Church



of Sweden in 2011, but the main part will be used in 2012–2013. The funds covered by the frame agreement between Sida and the Church of Sweden increased in 2011 to SEK 69 million compared to SEK 61 million for 2010 and SEK 68 million for 2009.

Cooperation with the dioceses

THE WAY FORWARD – DIALOGUE WITH THE DIOCESES

In 2011 a foundation was laid for work on the planning of activities and strategic issues through consultation and discussion with the diocesan boards. The Central Board prioritises collaboration with and support to the dioceses.

In 2011 it visited the Gothenburg and Uppsala dioceses. The diocesan boards in Karlstad and Visby visited the Central Church Office during the year to obtain information in a corresponding way on the Board's and Office's work, as well as to conduct joint discussions.

In 2012 the work will continue to crystalise and further priorities will be set in order for the outcome of the process to be realised in the long term.

JOINT SYSTEMS

Along with the dioceses, the national level is taking increasing responsibility for developing and establishing solutions to coordinate administration. In the development now taking place, a joint IT platform has been implemented in five dioceses so far, and four dio-

ceses will start adding their diocesan organisations and parishes/associations of parishes to the platform in 2012. A further three dioceses are preparing for such a process. Development of a joint telephony platform continued apace in 2011. It is now being successfully implemented in six dioceses, with several more dioceses intending to start implementation in 2012–2013 within the collaborative work made possible by the directed parish grant.

PARISH REGISTRATION SYSTEM

Two new versions of the parish registration system Kbok – the Church of Sweden's membership register – were launched during the year. These provide greater security and facilitate case management.

KYRKSAM

In 2011 work on the Kyrksam administrative system gained momentum. The aim of Kyrksam is to handle addresses and certain aspects of communication with both individuals active in the Church of Sweden and with organisations and groups. Kyrksam will be implemented in three stages starting from April 2012.

REGISTER OF FIXTURES AND FITTINGS

In September 2011 a project was started with the aim of creating a joint national digital register of fixtures, fittings and other items. If all goes according to plan, the register will be commissioned in June 2012.

The purpose of the register includes ensuring that church fittings



and fixtures which have cultural and historical value are registered uniformly, as well as providing the opportunity to register other valuable church items and some church furnishings.

DIOCESAN TRIPS

To provide inspiration and expand knowledge of international ecumenism, the national level organised a training trip to Switzerland in autumn 2011 for diocesan administrators who deal with ecumenical and international issues. Information officers in the dioceses also went on a trip, visiting the Evangelical-Lutheran church in Finland.

CHURCH OF SWEDEN'S WORLD DAY

In May 2011, more than 200 people – employees, elected representatives and volunteers from dioceses and parishes – met to talk about the identity and vision of the Church of Sweden's international mission and diaconia. It also provided an opportunity to present views on the name of the organisation, which was decided on during the spring by the Committee for International Mission and Diaconia. HRH Crown Princess Victoria took part during the day and is the patron of the Church of Sweden's international mission and diaconia

Minority languages

SÁGASTALLAMAT – CONFERENCE ON THE CHURCH OF SWEDEN AND THE SAMI

As commissioned by the Central Board, the Theological Committee and the Sami Council within the Church of Sweden arranged a conference on the Sami and the Church of Sweden in Kiruna in October. The aim was to clarify how the Church of Sweden could include the life, spirituality and culture of the Sami more clearly in its activities.

MINORITY LANGUAGES

In March 2011, the National Forum for Multilingual Work met in Sundsvall. 120 participants gathered to call attention to and raise the profile of the rich linguistic and cultural diversity in the Church of Sweden. It was the first time that the National Forum brought together Roma, Sami, Finnish speakers resident in Sweden and sign language users in the Church of Sweden for joint discussions.

ARCHBISHOP DISCUSSED ROMA AT CONFERENCE IN BRUSSELS

In June 2011, Archbishop Anders Wejryd took part in a dialogue seminar in Brussels arranged by organisations including the Conference of European Churches, the Council of European Bishops' Conferences, and the Churches' Commission for Migrants in Europe. The theme of the seminar was Roma inclusion: a need, a challenge, and a duty. Anders Wejryd spoke on the topic of *Att riva den osynliga muren* (Tearing down the invisible wall).

Children and young people

CHILDREN AND YOUNG PEOPLE 0–18 YEARS

The programme for children and young people from 0–18 years contributed in 2011 to more in-depth reflection in the field through four research reports being published. Programme days for teachers were offered, and a survey of the area of *Barn i utsatta situationer* (Children in vulnerable situations) continued. Contact was established with the Church's family counselling service and diocesan deacons. Together with the Church of Sweden's employer organisation, an offer has been made to heads of preschools, head parish priests and elected representatives consisting of a day's training regarding the new Swedish schools legislation, and *Arbetsledarutbildning för ansvariga i arbetet med barn och unga* (Supervisor training for directors of work with children and young people), starting in 2012.

In November 2012, Archbishop Anders Wejryd will be inviting people to attend *Barn och unga* (Children and young people). *The Archbishop's meeting in 2012*.

ABOUT CONFIRMATION

In 2011 the paperback *Om konfirmation* (About Confirmation) was published by the Church of Sweden with the aim of supporting the parishes in their communication with confirmation candidates. This book presents a picture of both the confirmation process and the Church of Sweden, and has been produced in collaboration with the Church of Sweden Youth, diocesan confirmation consultants, and Verbum publishers. Almost 7,000 copies were sold in 2011.

CHURCH – FOOTBALL 2011

In 2011 the Church of Sweden played several important 'away matches'. Parish workers visited a total of around 90 football schools, talking to children aged 7–13 about joy. Playing football should be fun.

The Church of Sweden's own football magazine *Schysst spel* (Fair play) was distributed to over 25,000 children and young people during summer football activities.

Diaconia (parish welfare work)

REFUGEE AND ASYLUM ISSUES

Projekt Människovärde

Projekt Människovärde (the Human Dignity Project) is about improving the Church of Sweden's ability to deal with racism and xenophobia in its own organisation and in dealings with others. During the year, two training programmes were arranged in Lund and Härnösand dioceses as part of the project. In addition, seminars linked to the project were organised during Almedalen Week in Visby.

Refugee and asylum issues

Kyrkornas globala vecka (The Global Week of Churches) in November 2011 examined the theme of *Migration and refugeeship*. The annual Mänskliga Rättighetsdagarna (Human Rights Days) also focused on the same theme in 2011. Campaigns have taken place regarding the right of Somalis to family reunification and highlighting the situation of exiled Iraqis.

CALLS TO THE CHURCH OF SWEDEN'S HELPLINES

Up until December 2011, the Duty Priest service had taken more than 62,000 calls, an increase of 3.5 per cent compared to the previous year. The need for human contact at night is great for many people, and an increasing proportion of the callers are recurrent.

By collaborating on this service in a national organisation, the Church of Sweden's parishes are able to cover the whole of Sweden, with joint opening hours and greater availability for individuals. The service is open every night and is free of charge, and all callers are entitled to remain anonymous.

The Church of Sweden Abroad

CHANGES IN ACTIVITIES ABROAD

The Church of Sweden Abroad is a pilgrims' church that alters and develops its activities based on the needs that arise. The forms that the work takes need to be reviewed so that they can be adapted to a changing world. Within the space of two years, the Church of Sweden Abroad has made changes to its activities in the Nordic region, Germany, Spain and the UK. The organisation has been restructured, with the number of staff dispatched being reduced by 25 per cent.

The Swedish Seamen's Church in London will be closed at the end of 2012/start of 2013, and the building will be sold. However, the Church of Sweden will maintain a presence in London, with a large, vibrant operation in Ulrika Eleonora parish and continued boat visits.

After analysis of the Church of Sweden's activities in Spain, the Committee for the Church of Sweden Abroad decided to close two parishes and make changes in terms of staff and the areas of geographical responsibility of the remaining parishes.

DEACON POSTS IN THE ORGANISATION ABROAD

With an emphasis on parish welfare, the Church of Sweden Abroad is clearly tasked with offering places where people can meet up to celebrate and commemorate the changes in life and the year. The Committee for the Church of Sweden Abroad made a historic decision in 2011 by setting up deacon posts. These can strengthen parish welfare practice and ensure that the parish develops favourably. Through solid parish welfare services, the Church of Sweden Abroad gains trust and is able to serve its members in the way that it should. The decision was made following a study.

COMMITTEE BECOMES COUNCIL

After a study lasting several years, the General Synod decided on an organisation for the Church of Sweden Abroad. The Committee for the Church of Sweden Abroad has been dissolved and a council has been created in its place. The Council is accountable to the Central Board for the work of the Church of Sweden among Swedes in other countries as per the adopted instruction. Two representatives of the parishes abroad will serve on the Council. The new organisation came into being on 1 January 2012.

The General Synod also decided to form a new constituency abroad in the General Synod, which has been assigned two permanent seats. The total number of seats will not change, but the number of equalisation seats will decrease from 26 to 24. This decision will come into effect as of 1 January 2013.

Training

BASIC CHURCH TRAINING

A study involving drafting and consultation for basic church training was conducted and concluded in 2011. The Committee for Education, Research and Culture made decisions on a new training organisation at the start of 2012.

55 deacons, 50 cantors, 2 organists, 9 parish educators and 100 priests completed their training during 2011.

Research

See also *Publications* on page 22.

CHURCH OF SWEDEN RESEARCH DAYS

The public nature of religion was the theme of the Church of Sweden research days in 2011. Over 40 researchers, of whom nine were international researchers (from Finland, the Netherlands, Norway, Switzerland, the UK and the US), were invited to give lectures on umbrella topics such as *Religion and politics*, *Se människan* (*See the human being*), *The church in society* and *Religion in the global community*. UR Samtiden from the educational television channel Kunskapskanalen and Svenska kyrkan play, the Church of Sweden's internet-based television service, filmed during one of the days.

DISCUSSION DAYS ABOUT THE FUTURE OF THE NATIONAL CHURCH

The Church of Sweden's national level, together with religious think tank Seglora smedja, carried out a project on the national church in 2011. Three days of discussion were held in Luleå, Västerås and Lund dioceses. The seminars dealt with what it means to be a national church in today's society and aimed to provide a more detailed description of the concept of a national church so that it can live up to the role and task of the church more effectively in a country that is becoming increasingly pluralistic. The project was the result of a previous decision in the General Synod.

Culture and cultural heritage

GÖTEBORG BOOK FAIR

The Church of Sweden is the Book Fair's biggest partner and has a comprehensive stage programme under the heading *Se människan*. (See the human being)

In 2011 its stand and stage programme received around 10,500 visitors, and around 2,500 people took part in seminars and other associated cultural events.

The theme for 2011 was Turning Points. The guests included Nina Hagen and Annika Östberg. Around 40 seminars were broadcast on Svenska kyrkan Play.

CHURCH OF SWEDEN FILM AWARD

The Church of Sweden Film Award, with prize money of SEK 50,000, is presented annually to a film that premiered during the year. The film is to be of a high level of artistic quality and raise the profile of existential, fairness and justice, and social issues in its plot and means of expression.

The 2011 Award went to the documentary *Mammas comeback*. The film is a revealing, complex portrait of a woman who finds strength by allowing herself to be weak.

The 2011 Youth Film Award went to the American film *Spork*, a cheeky, colourful film in a high school setting about the right to be different.

CULTURE GRANTS

Every year the Church of Sweden awards SEK 500,000 to innovative culture projects about existential issues. In 2011 eight projects were given grants, with a certain emphasis on projects for children. The two largest sums went to theatre projects featuring and designed for children and young people, and the year's only film project has children in the starring role.

ECCELSIASTICAL HERITAGE GRANTS

The 2011 conference on ecclesiastical cultural heritage was held in Kiruna in April. *Det kyrkliga kulturarvet, en resurs vid samhällsförändringar* (The ecclesiastical cultural heritage, a resource in social change) was the theme of the conference organised by the Church of Sweden and the Swedish National Heritage Board in collaboration with Luleå diocese.

In 2011, a total of SEK 432 million in state ecclesiastical heritage grants were used in dioceses, parishes and at the national level (SEK 5 million).

The ecclesiastical heritage grant constitutes around a quarter of the total cost of maintaining and investing in church buildings.

In June 2011 the Central Board made a decision on the grant allocation for 2012. A total of SEK 460 million will be allocated from the budget applicable for 2012. Of these, SEK 452 million were allocated to the dioceses and SEK 7 million to joint projects at national level.



Intra-Church development and referral responses

ENQUIRIES, REPORTS AND RESPONSES TO REFERRALS

The following publications in the Church of Sweden's reports series were issued during the year:

- 2011:1 Auditing and inspection of the Church's activities.
- 2011:2 Closeness and collaboration. Final report from the Structure Enquiry.

The 2011:1 report brought about a decision in the General Synod.

The Central Board provided the following referral responses during the year:

- *Proposal for instructions and general advice on emergency medical responses in disaster situations*, from the Swedish National Board of Health and Welfare.
- *En route to an internal market – creating a genuinely competitive social market economy*, from the Department for the EU Internal Market.
- *Incorrect registration of easements and usufruct rights in the property register*, from the Ministry of Justice.
- *Final report of the International Humanitarian Law Committee, International law in armed conflict (SOU 2010:72)*, from the Ministry of Defence.
- *Sweden's accession to the Convention on Cluster Munition*, from the Ministry for Foreign Affairs.
- *New structure for safeguarding human rights*, from the Ministry of Employment.
- *Green Paper on the future of VAT – Towards a simpler, more robust and efficient VAT system*, from the European Commission.
- *Proposal for guidance on Chap 4 of the Heritage Conservation Act*, from the Swedish National Heritage Board.
- *Code of practice for practising religion in the Swedish Armed Forces*, from the Swedish Armed Forces.

- Report of the All Party Committee on Environmental Objectives *Milestone targets in the Environmental Objectives System (SOU 2011:34)* and the report of the Swedish Environmental Protection Agency *A new basis for environmental objectives (report 6420)*, from the Ministry of the Environment.
- Report from the UN Secretary-General's *High-Level Advisory Group on Climate Change Financing* and the European Commission's official report *Scaling up international climate finance after 2012*, from the Ministry of Finance.
- *Still parents – about responsibility, economics and cooperation for the sake of the child (SOU 2011:51)*, from the Ministry of Health and Social Affairs.
- *Evaluation of Barents Rescue 2011*, from the Swedish Civil Contingencies Agency.
- Comment on K3 rules for preparing annual reports – *not-for-profit sector, chapters 36 and 37*, from the Swedish Accounting Standards Board.

FUNERAL ENQUIRY

In December 2011 the Swedish government submitted the bill *Some issues regarding funerals (Bill 2011/12:51)* to the Swedish parliament, which made a decision in March 2012 on changes to funeral legislation. The changes, which come into force on 1 May 2012, mean, among other things, that the longest permitted period between a death and burial or cremation will be shortened to one month, compared to two months previously.

DUTY OF CONFIDENTIALITY

The 2006 General Synod tasked the Central Board with clarifying the meaning and scope of the duty of confidentiality. The Board presented its results in the report *Ett skyddat rum – tystnadsplikt i Svenska kyrkan (2010:3)* (A protected space – duty of confidentiality in the Church of Sweden), which was circulated for consideration in October 2010.

Against this background, the 2011 General Synod decided on changes to the Church Ordinance and Order of Worship. The decision means, for example, greater protection for child victims, along with an addition to the ordination vows made by priests and deacons.

STRUCTURE ENQUIRY – CLOSENESS AND COLLABORATION

In 2011, the Structure Enquiry group, which consisted of representatives from the various nomination groups, presented its proposals to the Central Board in the report *Närhet och samverkan* (Closeness and collaboration). The Central Board commissioned the enquiry, whose overall aim was to create an organisational framework for the parishes, in 2008. The starting point is for the Church of Sweden to be able to deal with a future that will probably involve fewer Swedes belonging to the Church of Sweden and a continued exodus from rural areas to major cities. The report *Närhet och samverkan* was circulated for consideration until the start of December 2011, and the Central Board is expected to present a communication to the 2012 General Synod.

NEW SECRETARY-GENERAL

On 1 July 2011 a new Secretary-General, Helén Ottosson Lovén, took up her new post at the Church of Sweden; she was formerly head of finance and deputy Secretary-General. The Secretary-General of the Church of Sweden is the Church's highest management official in charge of leading the work at the Central Church Office in Uppsala.

Communication

COMMUNICATION STRATEGY

The Central Board adopted the *Kommunikationsstrategi med ansvarsfördelning för Svenska kyrkan* (Communication strategy for the Church of Sweden with division of responsibilities) in October 2011. The purpose of the strategy is to reinforce the image that people have of the Church of Sweden by planning and coordinating communication. A common communication strategy also leads to greater efficiency and lower costs for the Church. The strategy applies to the national level and is offered to other levels.

SURVEY OF PARISH NEWSLETTERS

In the late winter and early spring of 2011, the readworthiness of five parish newsletters from different parts of Sweden was surveyed. The results were strikingly similar and show that the newsletter/parish bulletin has high status. 51 per cent see the newsletter/printed matter when it arrives, and 41 say that they read it.

THE CHURCH OF SWEDEN'S NEW APPS

The Church of Sweden launched two mobile apps in 2011. The *Utomlands* (Abroad) app helps users to locate the Church of Sweden when they are abroad. It also shows which services our churches abroad can offer. The *Kyrkguiden* (Church Guide) app was released at the end of the year and helps users find their way to over three thousand churches in Sweden. In total, the apps were downloaded around three thousand times in 2011. Several dioceses have also developed apps.

INTRODUCTORY TRAINING IN SOCIAL MEDIA

In 2011, 22 introductory training courses in social media were held in 13 locations around Sweden, with approximately 580 participants and 100 employees from abroad taking part. Staff from the national level of the Church of Sweden gave the courses.

SVENSKA KYRKAN PLAY

From September 2011 to 15 April 2012, a pilot activity took place to test various forms of online television broadcasts. In addition to church services, a magazine programme was shown.

In spring 2012, the project will be evaluated and a report presented to the Central Board.

ARCHBISHOP'S BLOG

On the Church of Sweden's blog platform, those active in the Church of Sweden have the opportunity to write a blog. Around 30 bloggers took advantage of this in 2011, including Archbishop Anders Wejryd, who has written 41 blog posts that generated almost 700 comments. The blog gateway as a whole had 100,000 visits during the year.

Finance

FINANCIAL POLICY

At the end of 2011, all dioceses had adopted the ethical approach in the Church of Sweden's financial policy. Assets at national level are managed in line with this policy, which was adopted by the Central Board in 2010. The policy states that asset managers engaged are to select companies that contribute to more sustainable development through their operations.

NEW EQUITY FUND IN THE ETHOS FAMILY

In 2011 a new fund was launched in the Ethos family – Ethos Aktiefond Global. The Church of Sweden influences the ethical direction of all three funds, which are to be managed responsibly in line with the Church of Sweden's financial policy. The funds are aimed at dioceses, parishes, associations of parishes and priest salary assets (property donated to the Church, often as early as in the Middle Ages and often mainly comprising forests, land and funds).

Selected publications

- *Mångfaldens mosaik (The mosaic of diversity)*
A magazine about multilingualism. Reports, interviews and facts about the national minorities that the Church of Sweden currently works with. The Church of Sweden.
- *När jag gifter mig skall jag göra det på riktigt (When I marry I'm going to do it properly)* by Karin Jarnkvist, doctoral thesis. Part of the "Forskning för kyrkan" (Church of Sweden Research Series) book series. Umeå University.
- *Barnen i Svenska kyrkan (The Children in the Church of Sweden)* by Niclas Blåder, the Theology and Children project. The Church of Sweden.
- *Omvänd dig och bli som ett barn och lägg bort det barnliga (Convert yourself and become like a child and abandon what is childish)* by Arne Fritzon, the Theology and Children project. The Church of Sweden.
- *I begynnelsen var barnet (In the beginning there was the child)* by Mikael Larsson, the Theology and Children project. The Church of Sweden.
- *Och han tog dem i famnen...* (And he took them in his arms...) anthology, ed. Niclas Blåder. The Theology and Children project. The Church of Sweden.
- *An Unlikely Dilemma. Constructing a Partnership between Human Rights and Peace-building* by Göran Gunner and Kjell-Åke Nordqvist. In the Church of Sweden Research Series. Eugene, Oregon: Pickwick Publications.
- *Jordbruket vid ett vägskil: hur får vi maten och planetens resurser att räcka till alla? (Agriculture at a crossroads: how can we make food and the planets resources suffice for everyone?)* Report published by the Church of Sweden in collaboration with the Federation of Swedish Farmers and the Swedish Society for Nature Conservation.
- *Levande teologi (Living theology)* by Cristina Grenholm. Verbum förlag.
In the book *Levande teologi (Living theology)*, the author wishes to add some vitality to the discussion of theology and highlight the fact that theology is something we can create together. During the year, the book was discussed in several contexts: at a number of diocesan visits, at staff training sessions of the Church of Sweden Abroad, and at the Bishops' Conference. It was also discussed at Lund University, Gotland Church Week, the National Christian Council of Sweden, and the Göteborg Book Fair.
- *Medlem 2010. En teologisk kommentar (Member 2010. A theological comment)* by Johanna Gustafsson Lundberg. A theological reflection based on the book *Svenska kyrkans medlemmar (The members of the Church of Sweden)*. The Church of Sweden.
- *Nyckeln till Svenska kyrkan (The key to the Church of Sweden)*. The book *Nyckeln till Svenska kyrkan – en skrift om organisation, verksamhet och ekonomi 2011 (The key to the Church of*

Sweden – a publication about organisation, activities and economics, 2011) presents a knowledge base that can provide support in making decisions and contribute to further reflection among the Church's volunteers, elected representatives and employees. This year's *Nyckel* includes the study *I skärningsfältet mellan religion och politik (In the intersection between religion and politics)*, which aims to examine the space that the Swedish population consider religion should occupy in the public realm. The Church of Sweden.

- *Sann mot sig själv – öppen mot andra. Samtal om religionsteologi i Svenska kyrkan (True to yourself – open to others. Discussions about the theology of religion in the Church of Sweden)*. Book about the theology of religion produced by the Theological Committee on behalf of the Central Board, on the basis of a decision in the General Synod. Published by the Church of Sweden in collaboration with Sensus adult education association.
- *Svenska kyrkans medlemmar (The members of the Church of Sweden)*, by Jonas Bromander.
Based on a comprehensive questionnaire, the role and status of the Church of Sweden in Sweden today are described. A random sample of the Church of Sweden's members give their views on the task of the Church and talk about their own relationships with it. Verbum förlag.
- *Religion som resurs? Existentiella frågor och värderingar i unga svenskars liv (Religion as a resource? Existential issues and values in the lives of young Swedes)*. By Jonas Bromander and Mia Lövheim. Artos & Norma bokförlag.
- *Vad gör vi nu? Bemötande och förebyggande av sexuella övergrepp (What do we do now? Dealing with and preventing sexual abuse)*. Revised guidelines for dealing with and preventing sexual abuse in church contexts. The Church of Sweden in partnership with the Church of Sweden's employer organisation and the Church of Sweden Youth.

On the initiative of the Archbishop, the Church of Sweden's national level commissioned an independent survey of how the chapters of the Church of Sweden dealt with cases of suspected sexual abuse from 2000 until September 2011. The final report, *Inventering av anmälningar om misstänkta sexuella övergrepp ... (Inventory of reports of suspected sexual abuse ...)* was presented at the close of 2011 and showed that the chapters had in all essential respects followed the applicable guidelines.

Green ACCOUNTS

ABOUT THE CHURCH OF SWEDEN'S SUSTAINABILITY REPORT

Work to achieve more sustainable development is central to the Church of Sweden's task and activities, and is perhaps particularly prominent in international mission and diaconia, social work and ethical asset management. The Church of Sweden's work on sustainability rests on two principles that are fundamental to Christian faith and ethics. These principles state that all people are equal in worth and that as stewards of God's gifts, human beings are accountable to other people and to the Creation in general. However, the Church's own activities contribute to greenhouse gas emissions, for example. And as the Church of Sweden supports projects in communities with widespread poverty and weak control systems, there is also a risk of corruption and embezzlement. The Church of Sweden must therefore always be proactive and follow up and examine the effect of its own activities on people and the environment. As part of this work, for the second year running, the national level is drawing up a sustainability report in line with GRI's reporting framework*.

Unlike the 2010 sustainability report, which was presented as an annex to the Review and Financial Summary of the national level, the 2011 report has instead been integrated in it. The Green Accounts focus on how the national level works to minimise the potentially negative impact of the Church's own activities on sustainable development.

MANAGING SUSTAINABILITY WORK

The Central Board is responsible for the Church of Sweden's sustainability work at the national level and for ensuring that a sustainability perspective runs through the entire organisation, which means, at a national level:

- providing support to dioceses in their work on sustainable development,
- supporting aid projects that contribute to a sustainable society,
- helping to enable people to demand and defend their rights and dignity,
- working to ensure that all employees are committed to a sustainable society,
- focusing on employees' health and on them achieving a balance in life,
- working to ensure that our suppliers comply with our guidelines,
- ensuring that we make capital investments based on sustainable development and ethical consideration.

Sustainable development is to be an integral part of managing our activities. Within our international activities, this is expressed through:

- the Church of Sweden and its partners being active in civil society in terms of managing natural resources sustainably and ensuring people's right to satisfactory living conditions,
- the Church of Sweden and its partners being active players in civil society in terms of creating fair and just, safe and peaceful democratic societies.

The strategic work aims to expand the focus of activities on the basis of the overall goals. The goals and the strategic plans are clearly specified in three-year plans, budgets and key figures – which means that specific activities to promote sustainable development are planned, implemented and followed up. Policies and internal regulations are an essential part of management.

*The Global Reporting Initiative (GRI) is a network-based organisation that has developed a framework for sustainability reporting, i.e. a way for companies and organisations to report their economic, environmental and social impact. The framework is internationally recognised and is the most commonly applied in the field. There are three possible Application Levels: A, B and C, with C being the lowest level. More information is available at globalreporting.org/Home.

FINANCIAL POLICY FOR ETHICAL ASSET MANAGEMENT

The financial policy of the national level follows the UN Principles for Responsible Investment, PRI. This means that our investments are to be characterised by consideration and respect for the environment, human rights and working conditions, as well as good corporate governance. Information is also available at <http://svenskakyrkan.se/default.aspx?id=777272>.

POLICY AGAINST CORRUPTION AND EMBEZZLEMENT

The Church of Sweden's international mission and diaconia is to be able to manage the risk of corruption and embezzlement, even under difficult circumstances. The Church has a zero tolerance policy towards corruption and has put together a practical anti-corruption guide that its employees and partners have been made aware of.

During the entire period that the Church of Sweden supports a project, our international administrators are in close contact with the partner in question. This makes it easier to discover irregularities and deficiencies in administration. Checks are made on an ongoing basis, and we always acquaint ourselves with our partners' reports on both the project and joint finances.

If there are signs of corruption, the Church of Sweden launches an enquiry. If the suspicions are of a serious nature, further payments may be stopped immediately. The Church of Sweden also informs partners in the project and other Swedish financiers (Sida), and begins talks with the partner in question. In cases where corruption or serious administrative shortcomings are suspected and confirmed, the Church of Sweden initiates talks about how funds paid out should be repaid. In turn, the Church of Sweden may also be forced to repay funds that have not been used for the purposes intended.

PROCUREMENT POLICY

The Church of Sweden's work for sustainable, fair and just development makes major demands of the companies that we make agreements with. The national level's procurement policy states that all procurement must take place on the basis of three principles: good business practice, the equal worth of all people and good stewardship. In practice, this means that the Church may only procure from and enter into agreements with companies that behave responsibly towards their employees, society and the environment. Companies must also follow international agreements that aim to protect people and the environment.

TRAVEL POLICY

The travel policy of the national level states that trips in service are to be made taking into consideration environmental and social impact and cost-effectiveness. In practice, this means that employees must always consider the possibility of making trips by train or bus rather than air, although taking the time and distance into consideration. If possible, public transport must always be used in preference to taxis or cars.

EXTERNAL POLICIES AND THE CHURCH OF SWEDEN'S MEMBERSHIP OF HAP

The Church of Sweden's national level follows the codes of conduct of the ACT Alliance and the Red Cross. Read more about the Church of Sweden's membership of ACT on page 15. Since 1 January 2011, the Church of Sweden has also been a member of HAP International (Humanitarian Accountability Partnership International). HAP is the aid sector's first self-regulating body, and the organisation makes great demands of its members' credibility and governance.

The membership means that the Church's international mission and diaconia has pledged to follow HAP's principles on accountability, both accepting it on its own part and demanding it in relations with the Church's target groups. The Church of Sweden also works to quality assure its international mission and diaconia in line with HAP Standard 2010. The aim is for the organisation to be certified in the autumn of 2012.

THE CLIMATE-SMART OFFICE

ELECTRICITY AND HEATING

A significant portion of the total energy consumed in Sweden is consumed in buildings, and this also applies to the Church of Sweden's national level. Issues concerning heating and electricity are thus central to the organisation's sustainability work. Since 2011, the national level has purchased electricity that bears the "Bra miljöval" (Good Environmental Choice) label issued by the Swedish Society for Nature Conservation. This means that all electricity is based on renewable energy sources (in our case, 100 per cent hydro power), has low environmental impact, and takes biodiversity into consideration.

Electricity and heating (Sweden)*	2011	2010
Owned properties		
Electricity for activities and properties (kWh/m ²)	83	85
District heating (kWh/m ²)	61	72
CO ₂ to air (kg) due to district heating	12	14
Rented properties		
Electricity for activities and properties (kWh/m ²)	51	54

*See page 27 for calculation basis.

CARBON-OFFSET PAPER

Since 2011, the Church of Sweden's national level has used carbon-offset paper. This means that the price of the paper we purchase includes a fee that is used in its entirety to plant trees in Southern Africa. If the national level had instead purchased non-carbon-offset

paper, paper consumption would have generated around 2,500 kg CO₂ in 2011. See page 27 for calculation basis.

In order to save energy and paper, the national level's printers print double-sided copies and black and white text as standard. During the year, the Central Board has trialled tablet PCs in order to reduce the number of copies and mailings printed.

Paper consumption	2011	2010
Printing paper (kg/person)	35	36
Recovered office paper (kg/person)	54	45

GREEN IT

The Church of Sweden's national level is working with the dioceses to implement a joint IT platform. This means that many users will not require a computer. Instead, the software will be available on a central server that can be accessed via what is known as a thin client. Such a workplace considerably reduces our energy consumption.

In 2011, we began surveying our IT suppliers to find out how they work on issues concerning the environment and human rights.

CLIMATE-SMART TRAVEL

As of 2011 we have offset our air travel, meaning that we pay a climate fee of SEK 1 per kilo of emitted CO₂. Half of each Swedish krona goes to climate projects within the Church of Sweden's international operations, and the remaining half is used to reduce the environmental impact of our own activities. In 2011 carbon offsetting totalled SEK 1,231,000.

During the year, a new agreement was signed for taxi travel, and it is our hope that we will also be able to report on our taxi journeys in the future.

Travel	2011	2010
Train travel (km/person)	2,120	2,515
CO ₂ to air due to train travel, total (kg)	1.8	1.4
Air travel (km/person)	24,569	24,863
CO ₂ to air due to air travel, total (tonnes)	1,231	1,217

**See to the right for calculation basis.*

REPORTING PROFILE

SELECTION OF AREAS

The data and key figures that the Church of Sweden's national level reports have been assessed in an internal process as most material

with regard to the organisation's task and activities. Areas considered material are those that, according to GRI's own definition, reflect the organisation's significant economic, environmental and social impact, and may affect the assessments and decisions of stakeholders.

STAKEHOLDERS

We have identified the national level's stakeholders in an internal process. As Sweden's biggest faith community, the Church of Sweden plays a special role in Swedish society, and for that reason the society as a whole can be considered a stakeholder. The Church of Sweden has a particular responsibility towards its members, employees, donors, subsidiaries and associated companies. Other stakeholders are other faith communities, decision makers, public authorities, organisations that the Church of Sweden is a member of or has influence over in some other way, suppliers, and the Church of Sweden's dioceses, parishes and associations of parishes.

CALCULATION BASIS

We receive data on travel from our travel agent. The data values are based on standard data from the Network for Transport and Environment (NTM)*.

Air travel, intercontinental	140g CO ₂ /person km
Air travel, domestic	226g CO ₂ /person km
Air travel, international	110g CO ₂ /person km
Train travel	0.0021g CO ₂ /person km

The supplier of carbon-offset paper looks first at carbon dioxide emissions from pulp manufacture and from the paper mill where the paper in question is manufactured. A normal value in the industry is around 1 tonne of CO₂ per tonne of paper. After that, the supplier calculates the emissions resulting from the manufacturer's purchases of electricity, and finally adds emissions from transport to and from its own central warehouse in Jordbro.


In order to calculate CO₂ emissions to air due to district heating, we have used data from Vattenfall. In 2011, each kWh of district heating supplied gave an emission of 200 grams of CO₂ to air.

LEVEL OF REPORTING APPLIED

The Church of Sweden's national level reports on its sustainability work corresponding to GRI's Application Level C, but the aim is to be able to provide reports in line with Application Level B in the future. The index below states the page of the Review and Financial Summary/Green Accounts on which this information is available.

*NTM is a not-for-profit organisation that works towards establishing a recognised method for calculating emissions from transport of goods and passengers and the use of natural resources.

APPLICATION LEVEL OF THE REPORTING

		c	c+	b	b+	a	a+
Compulsory	Own assessment		Reporting attested by third party		Reporting attested by third party		Reporting attested by third party
	Statement from third party						
Voluntary	Examined by GRI						

CONTACT

Lina Lilja
lina.lilja@svenskakyrkan.se

Kyrkokansliet i Uppsala
Telephone: 018-16 95 00
Address: Svenska kyrkan, 751 70 Uppsala

GRI INDEX	
1 STRATEGY AND ANALYSIS	Page
1.1 Statement from the Secretary-General	8
2 ORGANISATIONAL PROFILE	
2.1 Name of the organisation	10
2.2 Primary brands, products and/or services	10
2.3 Operational structure of the organisation	10
2.4 Location of the organisation's headquarters	10
2.5 Countries where the organisation operates	The Swedish version 46
2.6 Nature of ownership and legal form	10
2.7 Markets served	9, The Swedish version 46
2.8 Scale of the organisation	9, 34, The Swedish version 46
2.9 Significant changes during the reporting period	19
2.10 Awards received in the reporting period	-
3 REPORT PARAMETERS	
3.1 Reporting period	Calendar year
3.2 Most recent previous report	Previous calendar year
3.3 Reporting cycle	Annual
3.4 Contact point	27
3.5 Process for defining report content	26
3.6 Boundary of the report	26
3.7 Specific limitations on the scope or boundary of the report	-
3.8 Basis for reporting on leased facilities, etc.	25
3.9 Data measurement techniques and the bases of calculations	26
3.10 Explanation of the effect of any re-statements of information provided in earlier reports	24
3.11 Significant changes from previous reporting periods in the scope, boundary, etc.	24
3.12 GRI content index	27
4 GOVERNANCE, COMMITMENTS AND ENGAGEMENT	
4.1 Governance structure	10
4.2 Role of the chair of the "highest decision-making body"	10, 36

4.3 Board members	37
4.4 Opportunities to submit proposals to the Board	11
4.5 Link between compensation received and the organisation's performance	No bonus
4.7 Process of demands for Board members' qualifications	36
4.8 Values, codes of conduct, etc.	25
4.12 External charters, principles and initiatives	25
4.13 Membership in associations/organisations	13, 15, 25
4.14 List of stakeholder groups engaged by the organization	26
4.15 Identification and selection of stakeholders	26
5 ECONOMIC INDICATORS	
EC3 Coverage of the organisation's defined-benefit plan obligations	The Swedish version 55
EC4 Substantial financial support from the public sector	17
6 ENVIRONMENTAL INDICATORS	
EN1 Materials used by weight or volume	26
EN4 Indirect energy consumption by primary energy source	25
EN17 Other relevant indirect greenhouse gas emissions by weight	26
EN29 Significant environmental impact of transporting members of the workforce	26
7 SOCIAL INDICATORS	
LA1 Total workforce by employment type and region	The Swedish version 42
LA3 Benefits provided to full-time employees	
LA4 Percentage of employees covered by collective bargaining agreements	100%
LA13 Composition of Board and management broken down by gender and age group	The Swedish version 45
HR1 Percentage of significant investment decisions that include clauses incorporating human rights requirements	100%
SO5 Public policy positions and participation in public policy development and lobbying	11, 12, 15, 19

HOW THE CHURCH of Sweden is run

The picture below comes from the exhibition on a Sami theme held in Uppsala Cathedral during the 2011 General Synod. Right: a schematic diagram of the Church of Sweden's organisation.



PARISH LEVEL

Holds church services, conducts training, and carries out diaconia (welfare) and mission work.

CHURCH ELECTIONS

DIRECT ELECTIONS TO ALL LEVELS
IN THE CHURCH OF SWEDEN EVERY
FOUR YEARS.

ASSOCIATION VESTRY

THE HIGHEST DECISION-MAKING
BODY IN AN ASSOCIATION OF PARISHES.
AN ASSOCIATION OF PARISHES IS A
FORM OF COOPERATION BETWEEN
PARISHES, WITH POOLED FINANCES
AND ADMINISTRATION.

PARISH ASSEMBLY*

HIGHEST DECISION-MAKING BODY
IN A PARISH.

PAROCHIAL CHURCH BOARD

EXECUTIVE BODY.

PARISH COUNCIL

EXECUTIVE BODY.

* In a parish that is part of an association of parishes,
the election may instead be for a directly elected parish council.

DIOCESAN LEVEL

Supports and supervises parishes.
Coordinates diocesan activities.

CHURCH ELECTIONS

DIRECT ELECTIONS TO ALL LEVELS
IN THE CHURCH OF SWEDEN
EVERY FOUR YEARS.

THE DIOCESAN COUNCIL

HIGHEST DECISION-MAKING BODY
IN A DIOCESE

CHAPTER

ASSESSES AUTHORISATION FOR
PRIESTS AND DEACONS AND
CONSIDERS APPEALED DECISIONS;
CHAIRIED BY THE BISHOP.

THE DIOCESAN BOARD

THE DIOCESE'S ADMINISTRATIVE
AND EXECUTIVE BODY,
CHAIRIED BY THE BISHOP.

NATIONAL LEVEL

Responsible for issues involving the whole Church,
and represents the Church nationally and internationally.

CHURCH ELECTIONS

DIRECT ELECTIONS TO ALL LEVELS
IN THE CHURCH OF SWEDEN
EVERY FOUR YEARS.

THE GENERAL SYNOD

THE CHURCH OF SWEDEN'S HIGHEST
DECISION-MAKING BODY.

THE BISHOPS' CONFERENCE

THE BISHOPS CONSULT
EACH OTHER ON JOINT ISSUES.

THE CENTRAL BOARD OF THE CHURCH OF SWEDEN

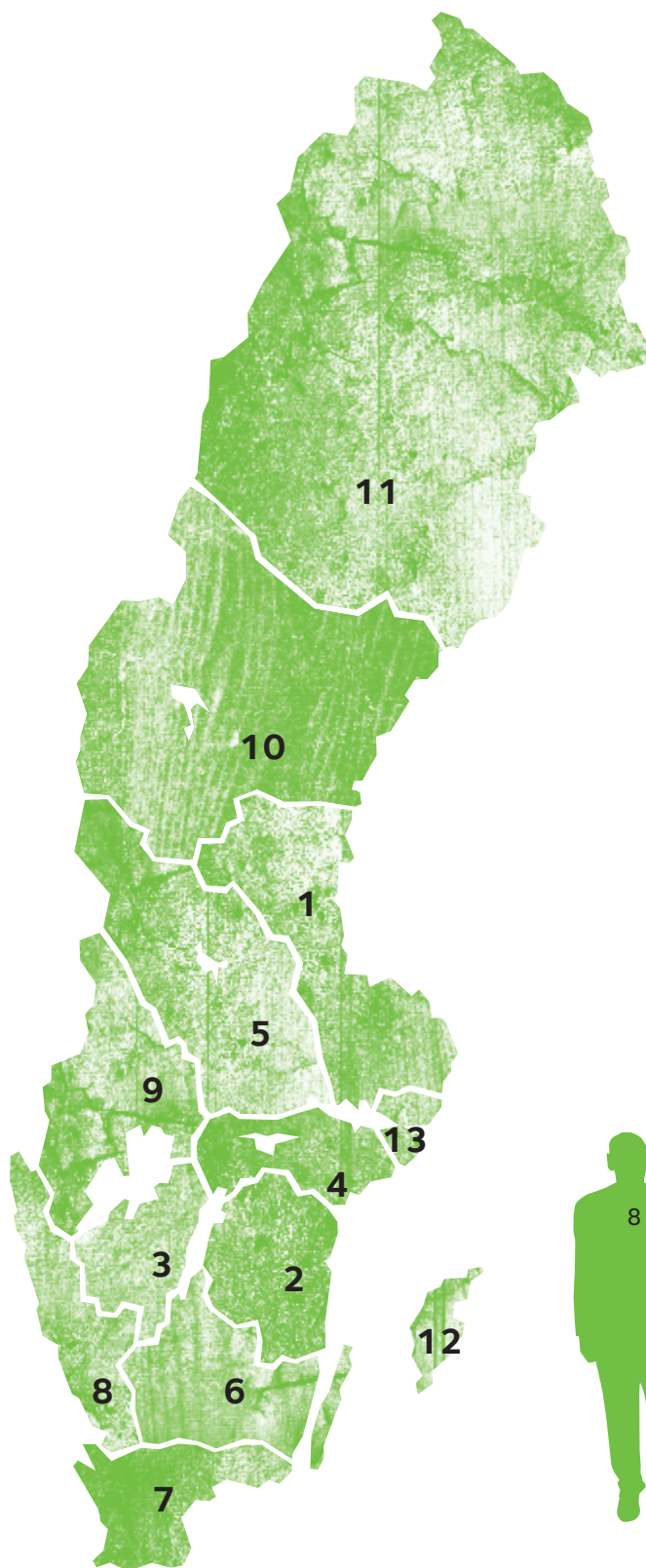
LEADS AND COORDINATES THE TASKS
OF THE NATIONAL LEVEL;
CHAIRIED BY THE ARCHBISHOP.

THE CHURCH COMMITTEES

THE DIOCESES OF the Church of Sweden

In 2011 the Church of Sweden was made up of 13 dioceses divided into a total of 1,456 parishes and 42 parishes abroad, and could count almost 70 per cent of Sweden's population among its members. The picture below (from 2011) shows Sweden's 14 bishops.





1. UPPSALA DIOCESE

736,318 INHABITANTS (10/11)

72.0% MEMBERS

136 PARISHES

ARCHBISHOP: ANDERS WEJRYD

BISHOP: RAGNAR PERSENIUS

2. LINKÖPING DIOCESE

541,952 INHABITANTS

73.3% MEMBERS

109 PARISHES

BISHOP: MARTIN MODÉUS

3. SKARA DIOCESE

543,049 INHABITANTS

73.6% MEMBERS

124 PARISHES

BISHOP: ERIK AURELIUS

Åke Bonnier will be ordained as the new bishop on 26 Aug. 2012.

4. STRÅNGNÄS DIOCESE

612,640 INHABITANTS

65.6% MEMBERS

73 PARISHES

BISHOP: HANS-ERIK NORDIN

5. VÄSTERÅS DIOCESE

576,369 INHABITANTS

73.8% MEMBERS

77 PARISHES

BISHOP: THOMAS SÖDERBERG

6. VÄXJÖ DIOCESE

629,712 INHABITANTS

73.2% MEMBERS

197 PARISHES

BISHOP: JAN-OLOF JOHANSSON

7. LUND DIOCESE

1,405,912 INHABITANTS

67.2% MEMBERS

189 PARISHES

BISHOP: ANTJE JACKELÉN

8. GOTHENBURG DIOCESE

1,316,865 INHABITANTS

66.6% MEMBERS

196 PARISHES

BISHOP: PER ECKERDAL

9. KARLSTAD DIOCESE

360,894 INHABITANTS

78.7% MEMBERS

88 PARISHES

BISHOP: ESBJÖRN HAGBERG

10. HÄRNÖSAND DIOCESE

368,454 INHABITANTS

79.0% MEMBERS

104 PARISHES

BISHOP: TUULIKKI KOIVUNEN BYLUND

11. LULEÅ DIOCESE

508,212 INHABITANTS

79.1% MEMBERS

57 PARISHES

BISHOP: HANS STIGLUND

12. VISBY DIOCESE

57,308 INHABITANTS

79.1% MEMBERS

42 PARISHES

BISHOP: SVEN-BERNHARD FAST

The diocese of Visby supervises the Church of Sweden's 42 parishes abroad.

13. STOCKHOLM DIOCESE

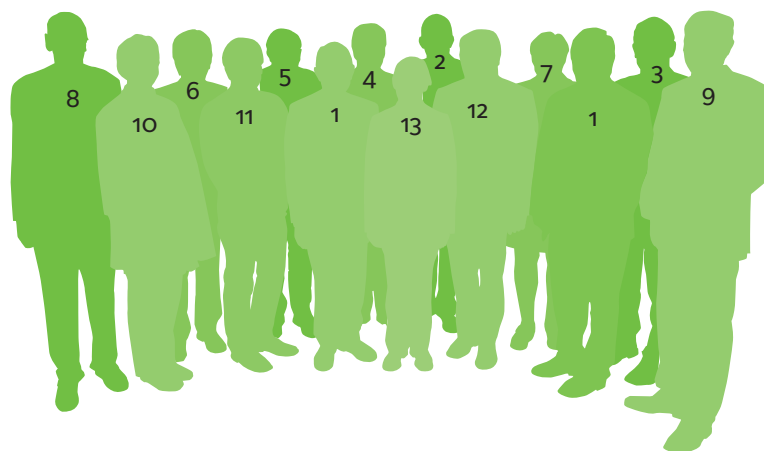
1,825,170 INHABITANTS

58.2% MEMBERS

64 PARISHES

BISHOP: EVA BRUNNE

Includes the Royal Court parish.



FINANCIAL SUMMARY 2011

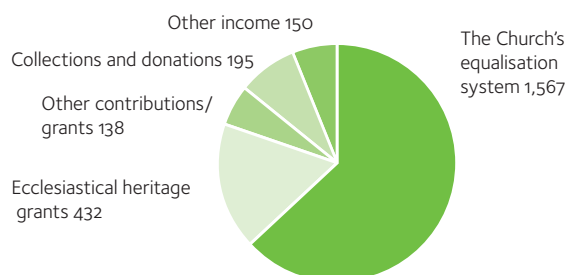
TASK AND ORGANISATION

The core activity of the Church of Sweden is primarily conducted at diocesan and parish levels. Operations at national level, which this report covers, support the Church of Sweden's shared ability to meet the expectations of its members and the general public. The main work constitutes provision of support to the following areas of activity: the Church's work in Sweden, International mission and diaconia, Work among Swedes abroad, Economic equalisation and Financial management.

TOTAL INCOME AND EXPENSE

The financial result in the Group reached SEK -201 million (SEK 354 million) and is mainly due to the negative result in asset management amounting to SEK -256 million. (Figures in parentheses refer to the previous year.) Total income was SEK 2,228 million (SEK 2,643 million), including the negative result from asset management. The largest income item consisted of equalisation fees. They are largely redistributed in the Church's equalisation system in the form of equalisation grants. The second-largest income item comprises financial grants received, mainly ecclesiastical heritage grants. The latter are recognised as income to the extent they are used. Funds not yet used are recognised as a liability in the balance sheet. Other grants come from sources such as the Swedish International Development Cooperation Agency (Sida), the EU and various foundations, and are mainly used in the Church's international work. Collections and donations are another significant source of income – especially for the international activities. Other income includes repayment of special payroll tax (employer's contributions) of SEK 117 million, concerning pension provisions before the year 2000. The amount was received in 2012 and is recognised as a current receivable.

DIAGRAM 1: INCOME* 2011 (SEK MILLION)



*excluding the negative result from financial management.

The focus of the work is based on the Church Ordinance and the decisions made by the General Synod and the Central Board of the Church of Sweden. Total expenses amounted to SEK 2,452 million (SEK 2,339 million). The diagram below shows the financial scale of the Church's main tasks.

DIAGRAM 2: EXPENSES 2011 (SEK MILLION)

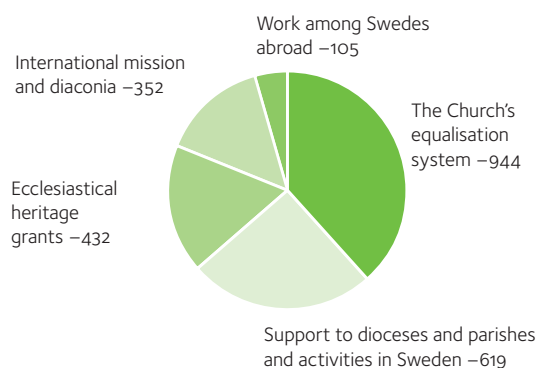


TABLE 1: EXPENSES DISTRIBUTED OVER TASKS 2011 (SEK MILLION)

	Outcome 2011	Outcome 2010
The Church's equalisation system	-944	-921
Support to dioceses and parishes and activities in Sweden	-619	-630
Ecclesiastical heritage grants	-432	-324
International mission and diaconia	-352	-354
Work among Swedes abroad	-105	-110
Expenses	-2,452	-2,339

EQUITY

Equity stood at SEK 5,064 million (5,265) at year-end.

FINANCIAL RESULTS AND POSITION

Other aspects of the operation's results and financial position at year-end are specified in the following income statements and balance sheets.

INCOME STATEMENTS

Amounts in SEK thousands	Note	Group		Parent company	
		2011	2010	2011	2010
	1				
Income					
Equalisation fees	2	1,567,225	1,552,724	1,567,225	1,552,724
Collections and donations	3	194,940	190,654	194,940	190,654
Financial grants received	4	570,162	439,045	570,162	439,045
Gains/losses on socially responsible (not-only-for-profit) investments	5	1,235	-1,753	673	-2,474
Gains/losses on cash management	6	534	1,195	1,175	1,418
Gains/losses on asset management	7	-256,072	428,968	-256,072	428,968
Other income	8	150,107	32,438	150,604	32,768
Total		2,228,131	2,643,271	2,228,707	2,643,103
Expenses					
Equalisation grants	2	-943,946	-921,266	-943,946	-921,266
Distributed grants	9	-909,558	-804,418	-909,558	-804,418
Other external expenses	8	-301,057	-266,858	-304,482	-270,621
Staff costs	10, 11, 12	-284,867	-328,991	-284,867	-328,991
Depreciation/amortisation of tangible and intangible fixed assets	13	-12,923	-17,362	-10,634	-15,119
Total		-2,452,351	-2,338,895	-2,453,487	-2,340,415
Income before changes in designated funds		-224,220	304,376	-224,780	302,688
Change in designated funds	14	-21,850	36,619	-21,850	36,619
Income after changes in designated funds		-246,070	340,995	-246,630	339,307
Share of profit/loss in associated companies		3,256	6,526	-	-
Profit/loss before financial items		-242,814	347,521	-246,630	339,307
Financial items	15				
Financial income		45,581	6,335	45,581	6,335
Financial expenses		-2,922	-1,176	-2,922	-1,176
Total		42,659	5,159	42,659	5,159
Profit/loss after financial items		-200,155	352,680	-203,971	344,466
Appropriations		-140	-	-	-
Group companies' tax		-1,013	1,666	-	-
Net income for the year	16	-201,308	354,346	-203,971	344,466

BALANCE SHEETS

Amounts in SEK thousands	Note	Group 31 Dec 2011	31 Dec 2010	Parent company 31 Dec 2011	31 Dec 2010
ASSETS	1				
<i>Fixed assets</i>					
<i>Intangible fixed assets</i>					
Capitalised development expenditure	17	13,998	9,178	13,998	9,178
<i>Tangible fixed assets</i>					
Buildings and land	18	142,518	146,906	72,789	75,185
Equipment	19	11,510	10,137	10,634	9,139
Total		154,028	157,043	83,423	84,324
<i>Financial fixed assets</i>					
Participating interests in Group companies	20	-	-	55,774	55,774
Long-term receivables in Group companies	21	-	-	30,000	30,000
Participating interests in associated companies	22	52,860	50,469	42,295	42,258
Socially responsible (not-only-for-profit) investments	23	40,505	40,184	34,387	34,377
Other long-term securities	24	4,595,271	5,234,224	4,595,271	5,234,224
Other long-term receivables		185	249	185	249
Total		4,688,821	5,325,126	4,757,912	5,396,882
Total fixed assets		4,856,847	5,491,347	4,855,333	5,490,384
<i>Current assets</i>					
Inventories		2,307	1,600	2,307	1,600
<i>Current receivables</i>					
Current receivables		143,376	25,674	143,332	25,667
Prepaid expenses and accrued income	25	49,389	55,851	49,389	55,851
Total		192,765	81,525	192,721	81,518
<i>Current investments</i>	26	2,152,532	1,781,057	2,152,532	1,781,057
<i>Cash and bank balances</i>	27	1,407,983	1,459,352	1,407,983	1,459,352
Total current assets		3,755,587	3,323,534	3,755,543	3,323,527
TOTAL ASSETS		8,612,434	8,814,881	8,610,876	8,813,911
EQUITY AND LIABILITIES					
<i>Equity</i>	16				
Equity at the start of the year		5,265,342	4,910,996	5,260,314	4,915,848
Net income for the year		-201,308	354,346	-203,971	344,466
Total		5,064,034	5,265,342	5,056,343	5,260,314
<i>Designated funds</i>	14	238,895	217,045	238,895	217,045
<i>Pension provisions</i>	28	71,827	73,438	71,827	73,438
<i>Other provisions</i>	29	123,351	25,854	123,351	25,854
<i>Current liabilities</i>					
Accounts payable, trade		55,407	46,961	53,870	46,505
Liabilities to Group companies				7,682	4,520
Other current liabilities	27	3,006,837	3,113,786	3,006,825	3,113,780
Accrued expenses and deferred income	30	52,083	72,455	52,083	72,455
Total		3,114,327	3,233,202	3,120,460	3,237,260
TOTAL EQUITY AND LIABILITIES		8,612,434	8,814,881	8,610,876	8,813,911
<i>Collateral pledged</i>	31	50,000	50,000	50,000	50,000
Contingent liabilities	32	-	3,302	-	3,302

CENTRAL BOARD OF the Church of Sweden

THE NATIONAL LEVEL of the Church of Sweden is responsible for Church-wide matters regarding intra-Church standards, review of decisions, joint information, education and training, consultation, ecumenical relationships, international diaconia and mission work. A key task is also to act as the voice of the Church in the public arena, in Sweden and internationally.

When the General Synod is not in session, the Central Board of the Church of Sweden is the Church's highest responsible body. It leads and coordinates the management of the tasks carried out by the national level. The Central Board deals with issues as stated in the Church Ordinance and decides on all general and day-to-day issues at national level.

The Board's work includes commenting on documents received for referral, issuing statements and taking care of official contacts. It consults the Bishops' Conference on theological and ecumenical issues. Other

common matters dealt with by the Central Board are canon law, information and finances.

The Central Board is the General Synod's drafting and executive body, which means that it is able to put forward proposals on various issues through written communications to the General Synod. It also carries out the tasks set by the General Synod.

The Central Board is the body of elected representatives that submits a plan of operations and an annual review and financial summary for the national level to the General Synod. The administration (management) carried out by the Board is reviewed.

The Church Ordinance stipulates that the Central Board, or another body instructed by the General Synod, shall support the work of the dioceses in developing parish life, be responsible for the Church's work among Swedes in other countries, be responsible for the Church's official relations with other churches and faith communities,

coordinate the responsibility of the Church and its parishes for international mission work and international diaconia, state the admission requirements for the Church's basic training programmes and draw up their syllabi, ensure that there are a suitable number of places on these programmes, be responsible for the Church's economic equalisation system (for distribution of financial resources from fees), manage general issues pertaining to the Church's joint IT systems, promote research of significance to the Church and aim to ensure that the Church offers rich and diverse cultural activities that promote dialogue about religion and approaches to life.

The Central Board is appointed by the General Synod for a period of four years, and has 14 elected members and 14 deputies. The Archbishop is the ex-officio Chair. One of the bishops acts as deputy to the Archbishop.



The Central Board of the Church of Sweden, 2011

THE CENTRAL BOARD OF THE CHURCH OF SWEDEN, 2010–2013

Members (front row), from left:

1. Bertil Persson (dep.)
2. Mary Österström (dep.)
3. Annette Lundquist Larsson
4. Ärkebiskop Anders Wejryd (chair)
5. Anna Lundblad Mårtensson
6. Iréne Pierazzi
7. Birger Wernersson (dep.)
8. Celina Falk (dep.)

Back row:

9. Lars Johnsson
10. Bo Hanson
11. Bertil Olsson (dep.)
12. Levi Bergström (1st dep. chair)
13. Ulla Rickardsson (dep.)
14. Sten Elmberg
15. Ingrid Smittsarve (2nd dep. chair)
16. Mats Hagelin
17. Britt Louise Agrell (dep.)
18. Erik Sjöstrand (dep.)
19. Hans Wallmark
20. Nils Gårder
21. Dag Sandahl (dep.)



Not pictured: Birgitta Halvarsson, Olle Burell, Lennart Sacredéus and the deputies Bishop Esbjörn Hagberg (dep. for the Archbishop), Marta Axner, Uhlf Skoglund, Mats Green, Cecilia Brinck and Per-Henrik Bodin.

FOR THOSE OF YOU WHO WANT TO KNOW MORE

MORE ABOUT THE CHURCH OF SWEDEN

Do you have any questions about life or death, or need someone to talk to? Or would you like to get involved and help make the world a better place? The Church of Sweden is a fellowship, offering a context in which to meet other people and look at your faith in more depth. The Church is dependent on involvement and support from you and others. And everyone can contribute in some way. The broad activities of the Church of Sweden welcome you, whoever you are. Contact your parish or the Church of Sweden Information Desk. You will find your parish's contact details at www.svenskakyrkan.se.

READ MORE ABOUT THE CHURCH OF SWEDEN

www.svenskakyrkan.se

CHURCH OF SWEDEN INFORMATION DESK

E-MAIL: info@svenskakyrkan.se

TEL: + 46 (0)18 16 96 00

POSTAL ADDRESS: Svenska kyrkan, SE-751 70 Uppsala, SWEDEN



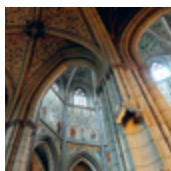
IMAGE GALLERY 2011



Page 4
Archbishop Anders Wejryd
PHOTO: MAGNUS ARONSON/IKON



Page 8
Secretary-General
Helén Ottosson Lovén
PHOTO: MAGNUS ARONSON/IKON



Page 9
PHOTO: MAGNUS ARONSON/IKON



Page 11
UN in New York
PHOTO: MAGNUS ARONSON/IKON



Page 11
Awarding the Church of
Sweden's culture grants.
PHOTO: MAGNUS ARONSON/IKON



Page 11
PHOTO: MAGNUS ARONSON/IKON



Page 13
Inauguration of Per Eckerdal as
bishop of Gothenburg diocese.
PHOTO: MAGNUS ARONSON/IKON



Page 13
Nobel Peace Prize laureate
Leymah Gbowee
PHOTO: MAGNUS ARONSON/IKON



Page 14
Refugees in Dadaab, Kenya
PHOTO: PAUL JEFFREY/ACT



Page 14
PHOTO: MAGNUS ARONSON/IKON



Page 14
The Church of Sweden's
"Agera" [act] volunteers,
climate summit in Durban
PHOTO: IDA THOMASSEN/IKON



Page 16
FOTO: PAUL JEFFREY/ACT



Page 17
The Church's World Day in
Uppsala. HRH Crown Princess
Victoria awards a prize.
PHOTO: ANDERS TUKLER/IKON



Page 18
PHOTO: MAGNUS ARONSON/IKON



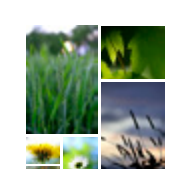
Page 18
The Church of Sweden Abroad,
Greece
PHOTO: MAGNUS ARONSON/IKON



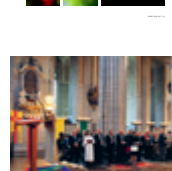
Page 21
PHOTO: MAGNUS ARONSON/IKON



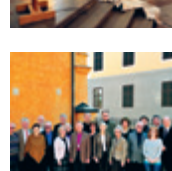
Page 21
Nina Hagen on the "See the
human being" stage at the
Göteborg Book Fair
PHOTO: MAGNUS ARONSON/IKON



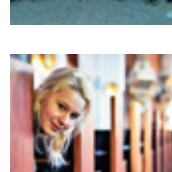
Page 23
PHOTO: MAGNUS ARONSON/IKON



Page 28
The church service to
inaugurate the General Synod,
Uppsala Cathedral
FOTO: MAGNUS ARONSON/IKON



Page 57
The Central Board of the Church
of Sweden
PHOTO: MAGNUS ARONSON/IKON



Page 60
PHOTO: MAGNUS ARONSON/IKON



ECO-LABELLED
Printed matter
341142

The Church of Sweden's Annual Review and Financial Summary for 2011
is an eco-labelled publication.



The paper used for the Annual Review and Financial Summary for 2011
is FSC-labelled.

Production details

TEXT: Central Church Office

PHOTOS: IKON, the Church of Sweden's image agency, unless otherwise stated

EDITOR: Carolina Alpin, Central Church Office

DEPUTY EDITOR: Maria Svensk, Central Church Office

IMAGE EDITOR: Magnus Aronson

PRODUCTION AND PRINTING: Ineko AB

TRANSLATION: Translator Scandinavia AB

Additional copies can be ordered from:

Informationsservice

Svenska kyrkan, SE-751 70 Uppsala, SWEDEN

E-MAIL: info@svenskakyrkan.se

TEL. +46 (0)18 16 96 00

ARTICLE NUMBER: SKI2032

