

b.

22

R

H

1



















fs























DL

C



R

17

51



















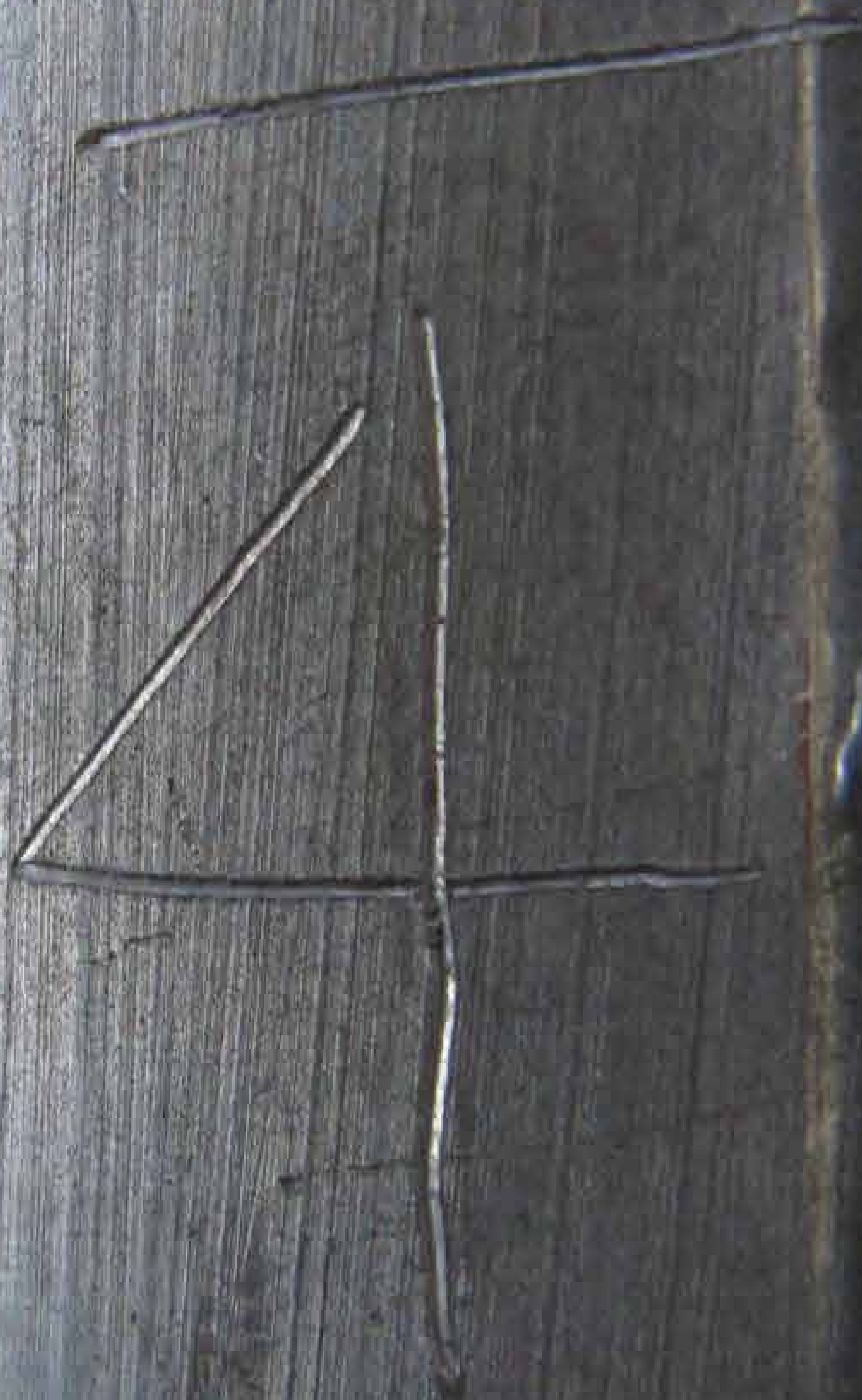






















9





12

12

12



















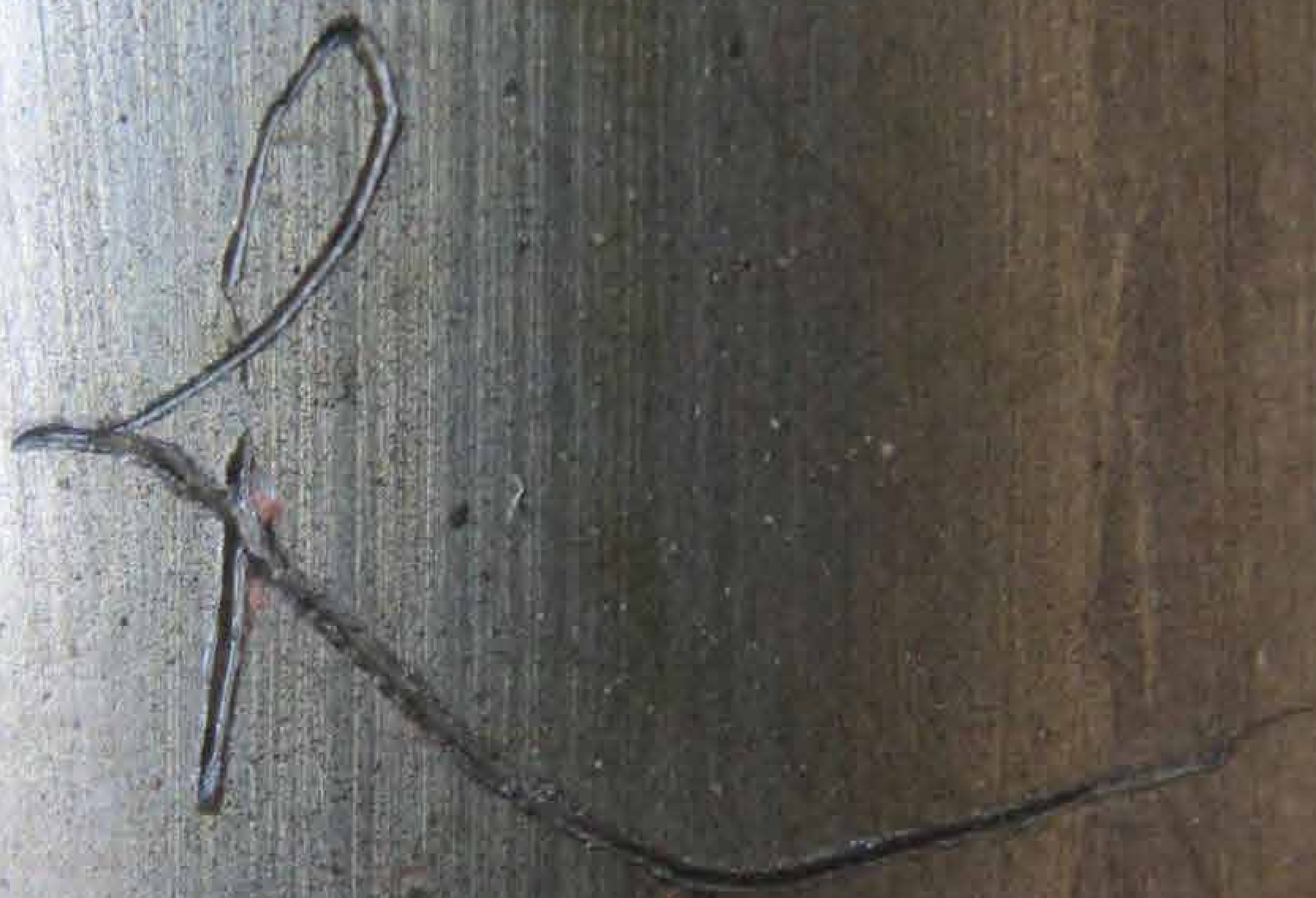


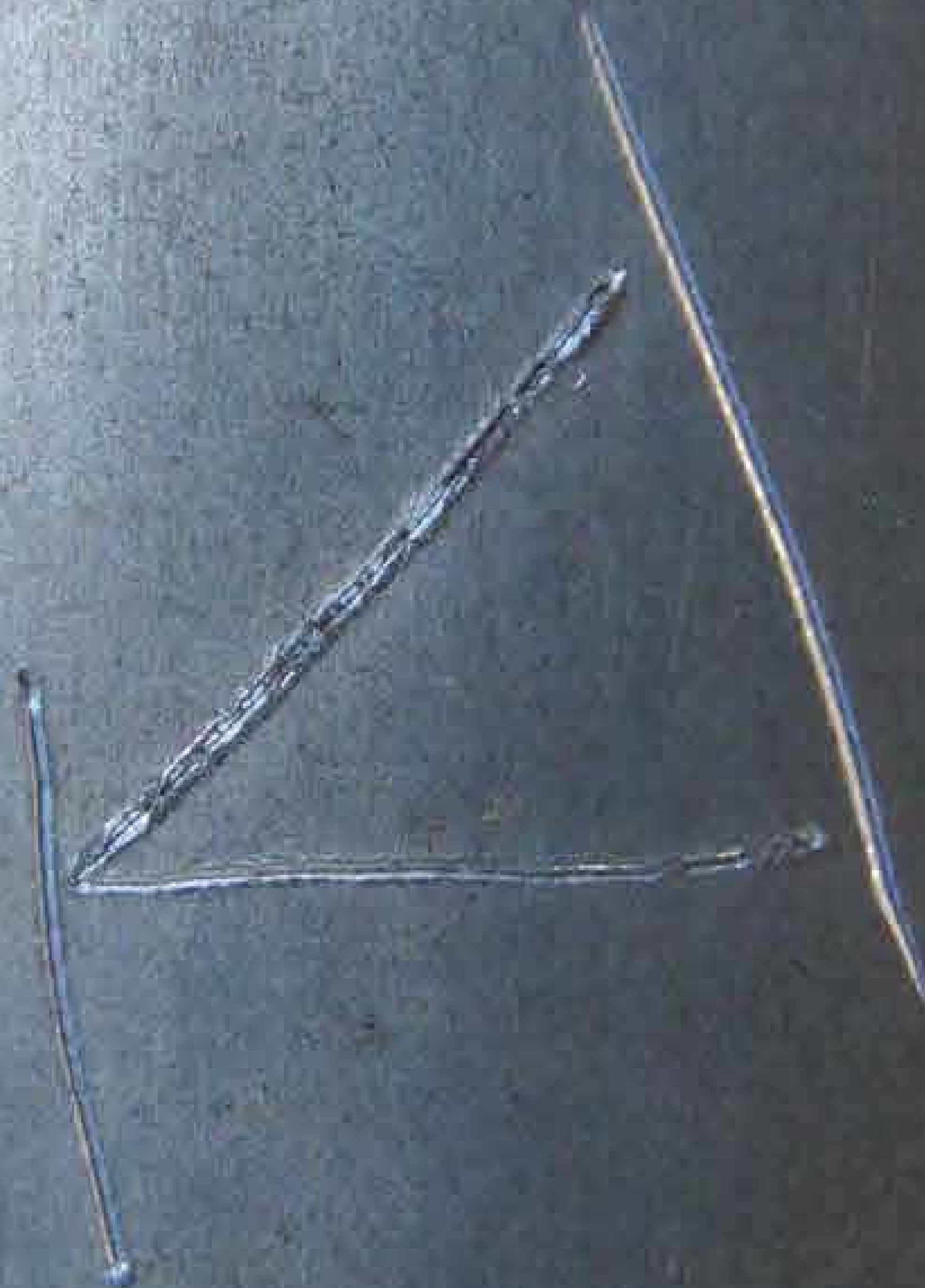
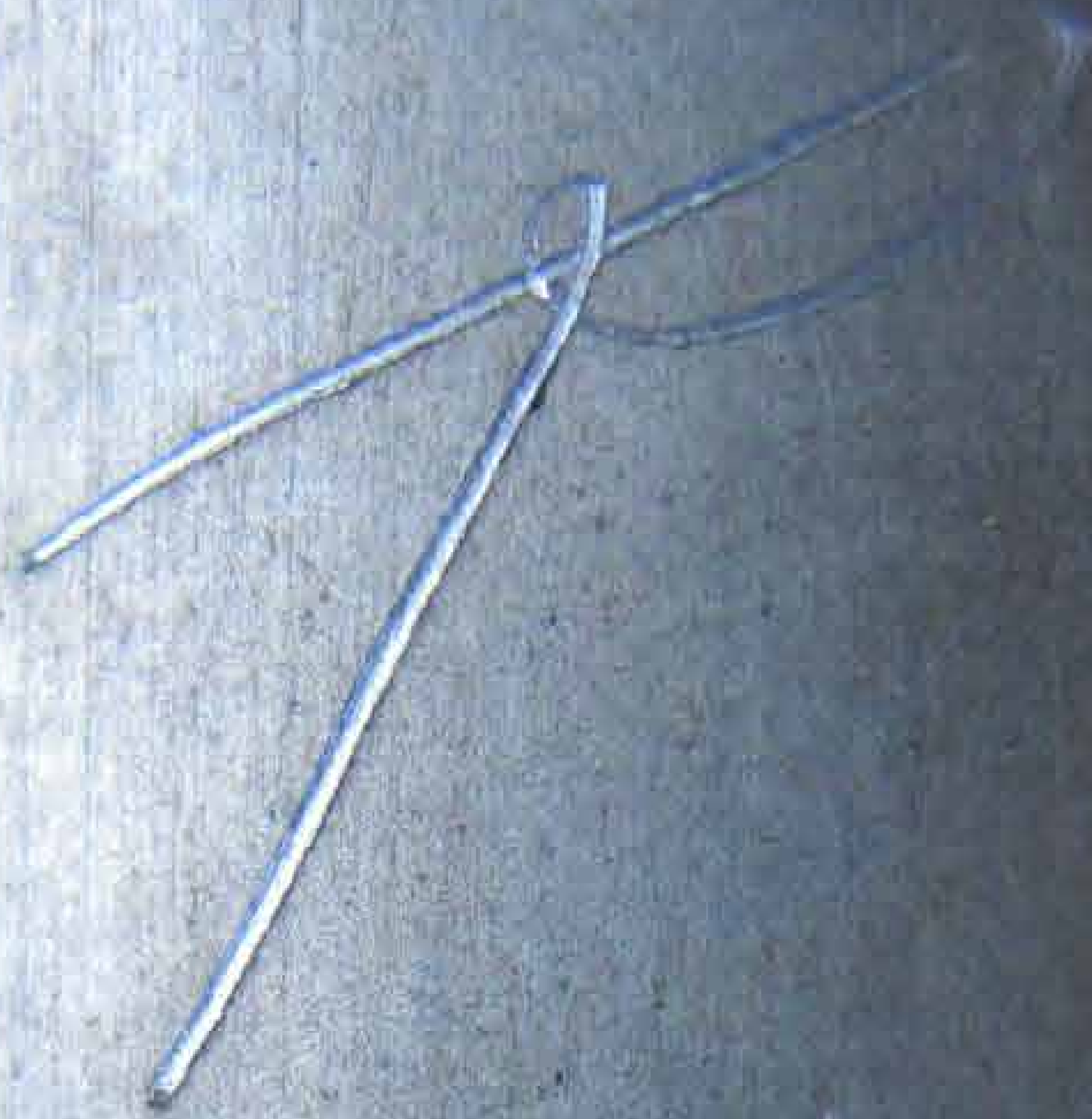




95

















8

1

100





20

17

17

















1101

10

11

12



110

110











CII

10

11

12



16

17

23









195

12

13

14

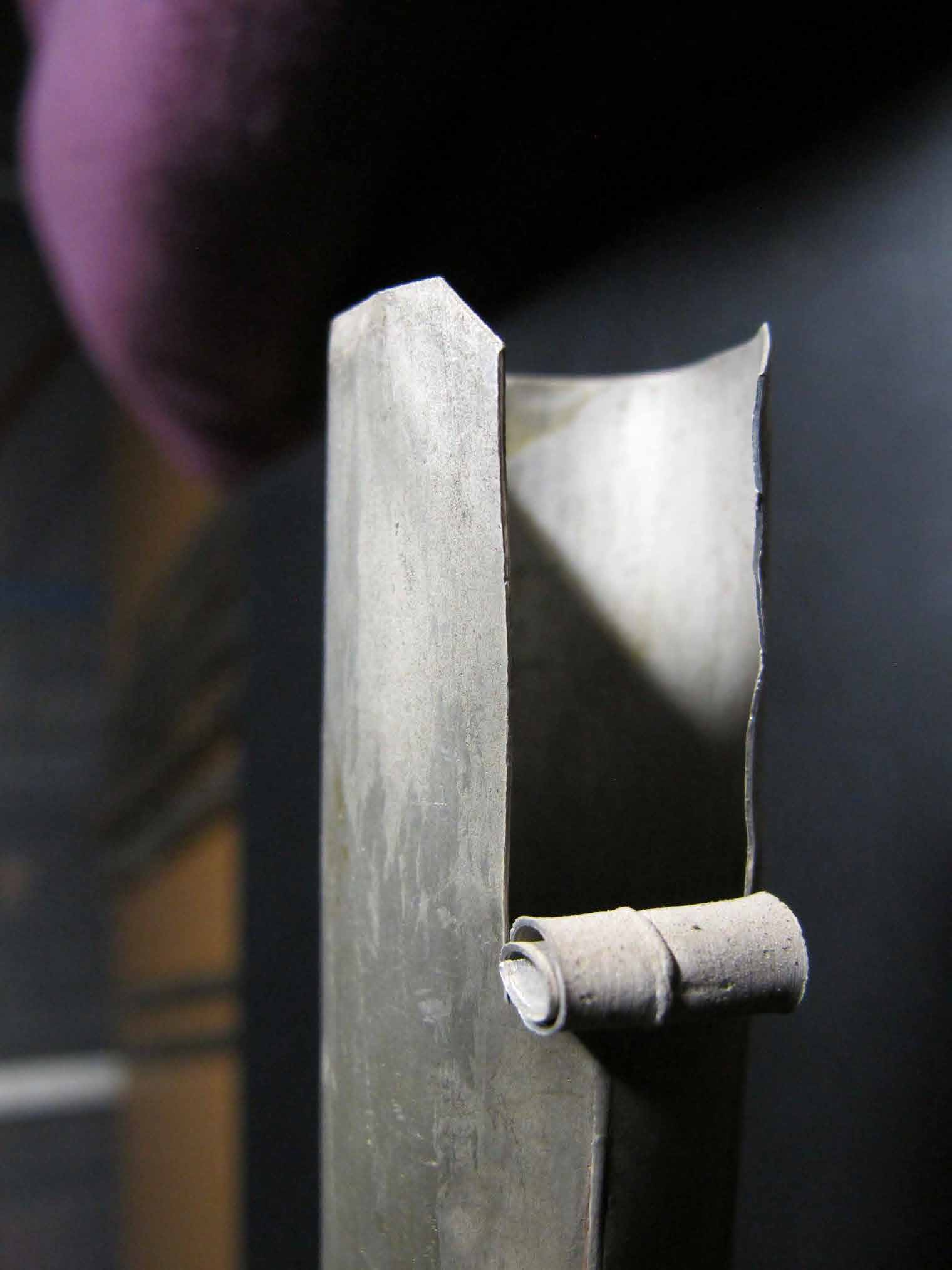
98

12

12

一
九
二

37









10

10

11

12



FE

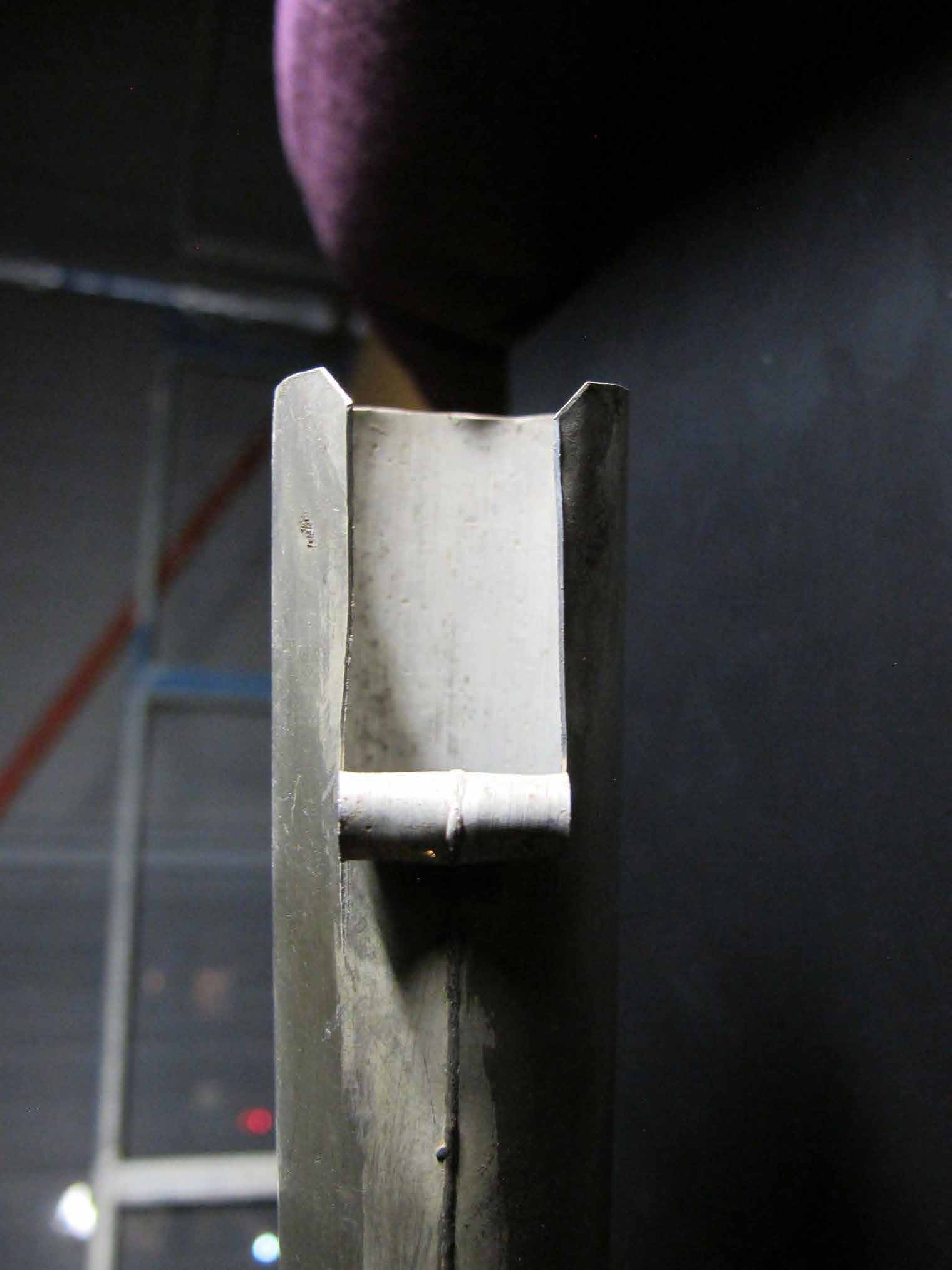
10

54

10



4













R

III

2

12



10

-

C









1c25

10

11

12















5



10

11

12













21



二
ノ
ノ











2
= f_s



1102

1102

1102







75

R

11

2









R.P.

stum.

R

D

BO



R

III

X













1537

B

F III 2

B

B

TH

25

















Gs

五



51

11









102

111

102







Ryggpositiu
Princ. 8.

G

Pygpositiu

Princ. 8.

G

11

























A

GT

GG





K

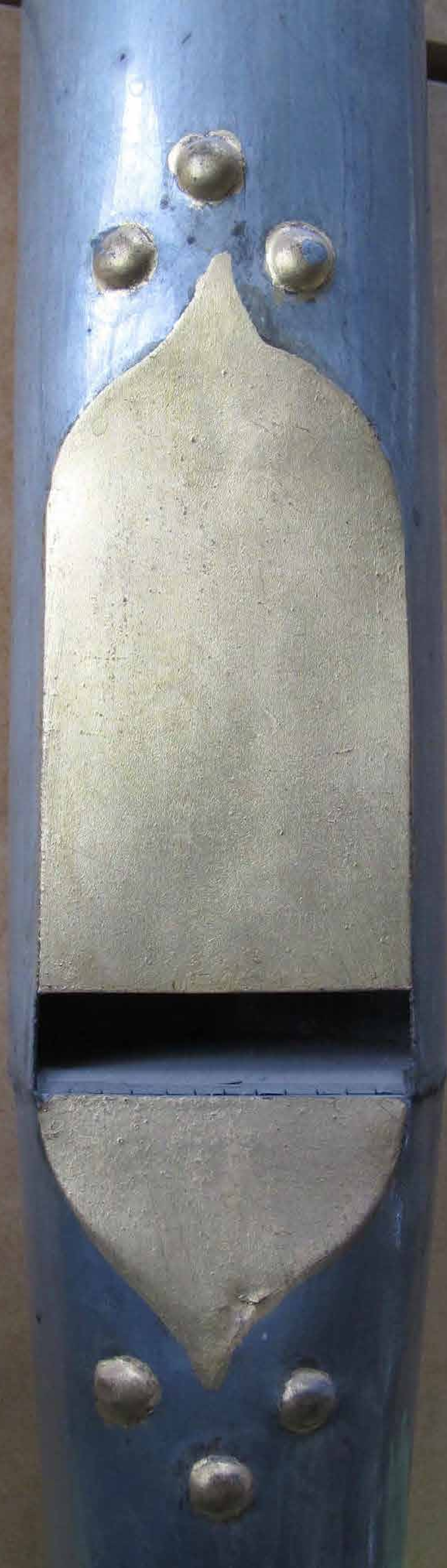
W

B















H

A

天

2







10

III

10





R.P.

Stum.



R.P.
stum

H
O

R.P.
stum

H
Q







HH

D



R

11

7













110



11

12

10

11

12

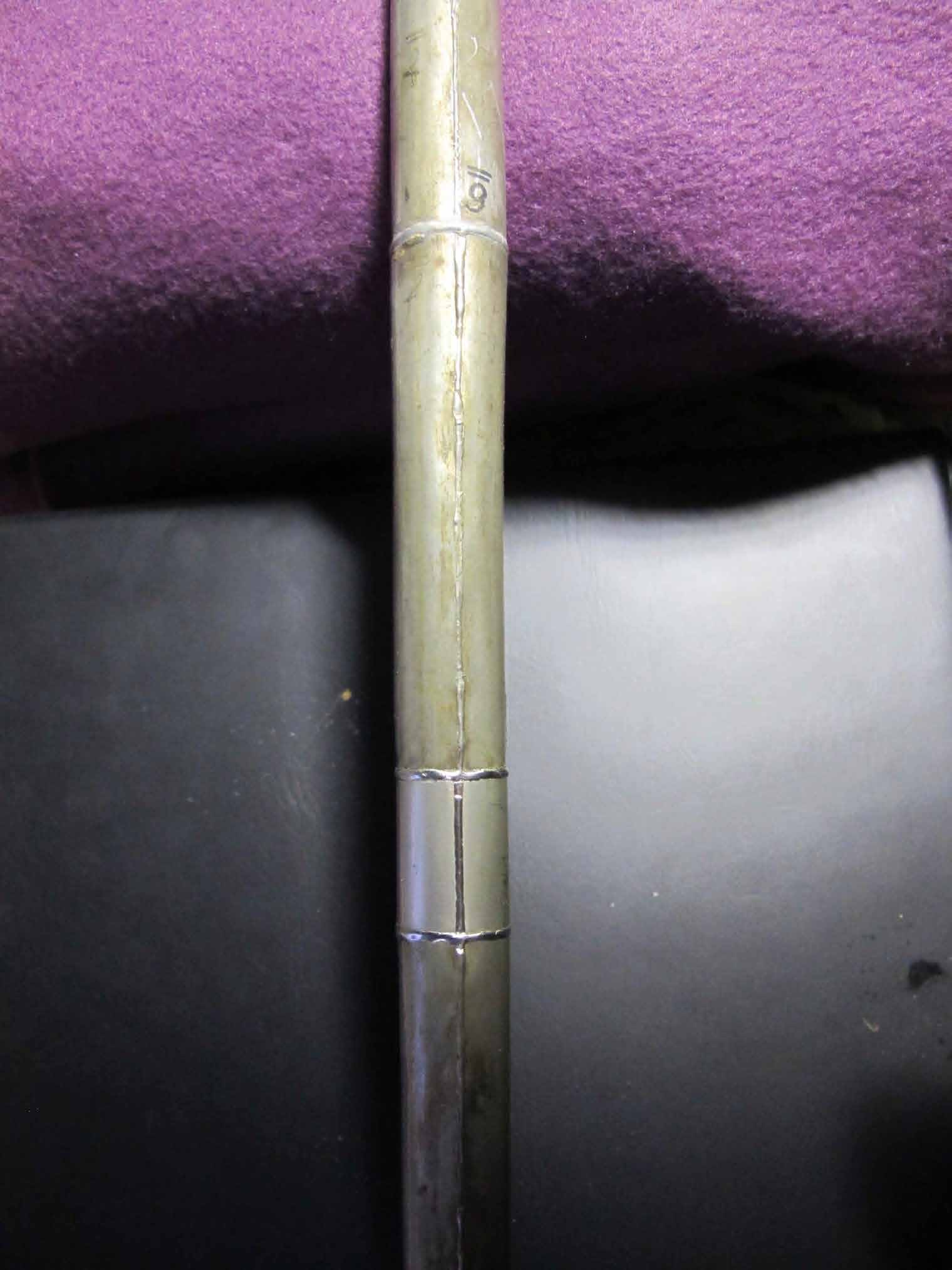
13



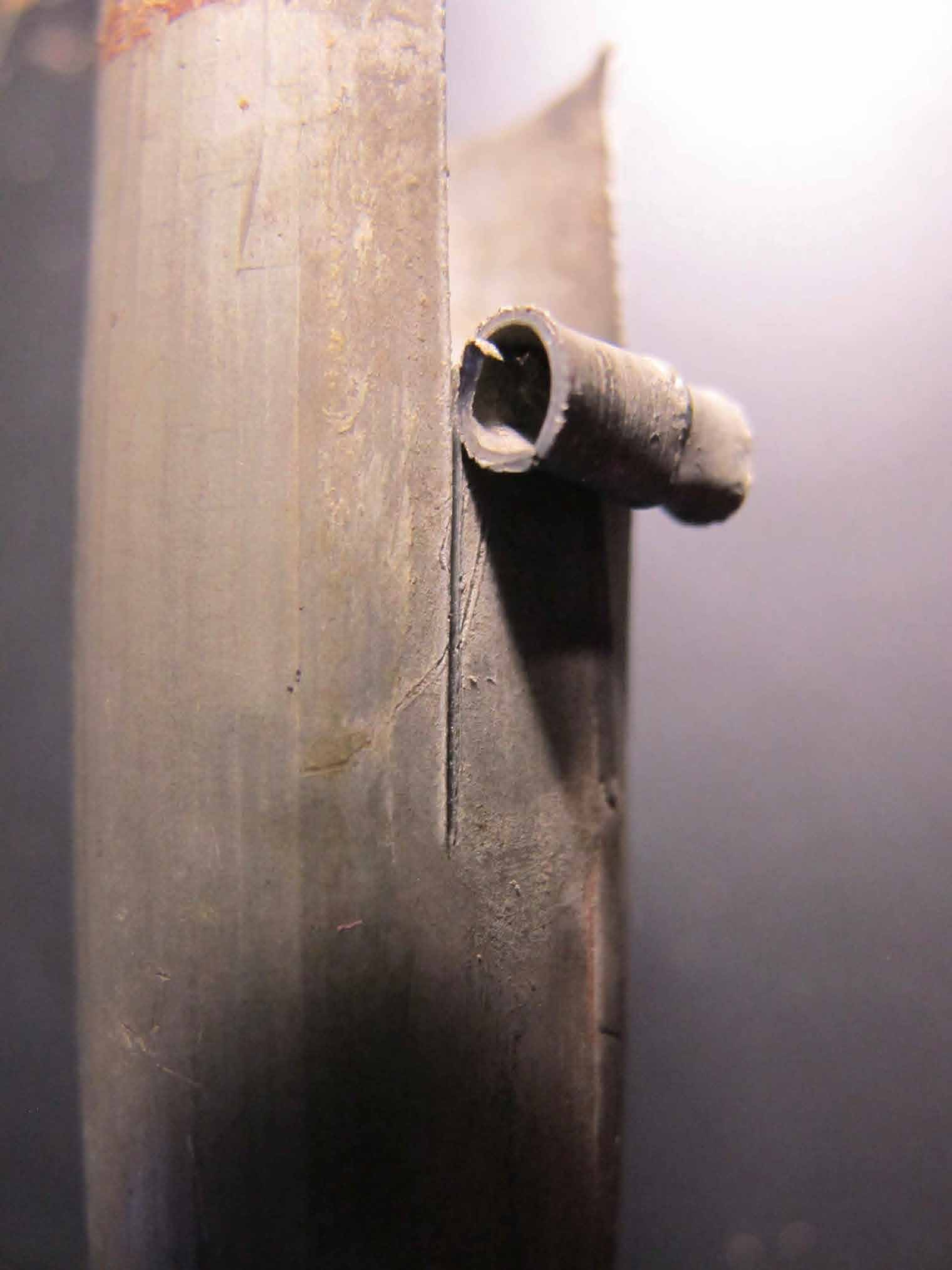
















R

F

R



==

ds





110

110

11

2

11

ds













1

A

10

R

IN

X











19







2

1

1

1





十一

五









1
da



天

一

TP

TH

ST











天

一

五

2

1111

1

1

4









1

0

0

18

XX

18

18









117



34

50

12

13

14









II
X

112

112





4

11

9











CS

13







R

K

7















Q





R

A

6

















f

~

du

2

OK

8

OK

22

PS

TK

Handwritten scribbles and marks, possibly including the letters "K" and "L".

Handwritten mark, possibly the letter "L".

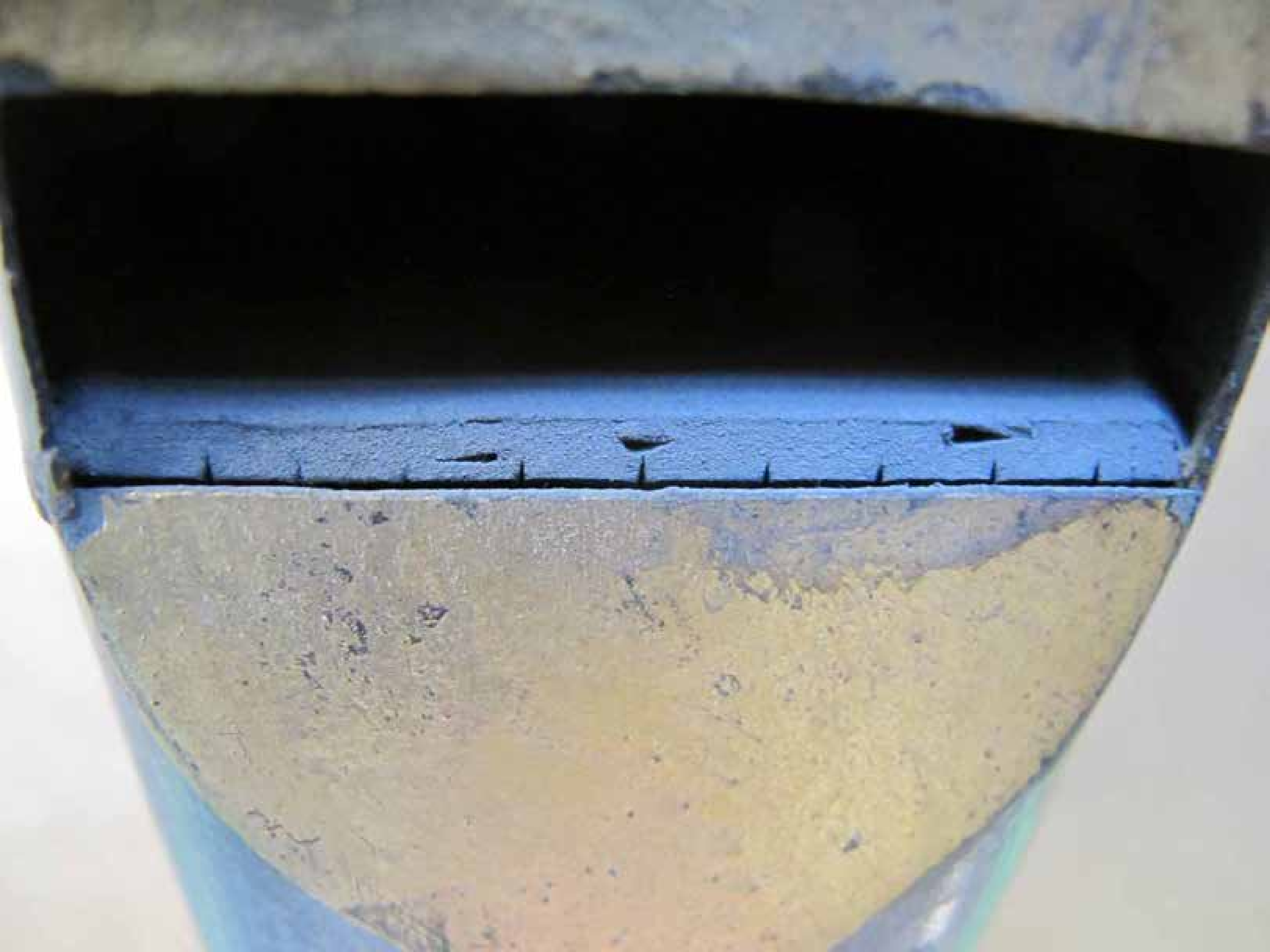








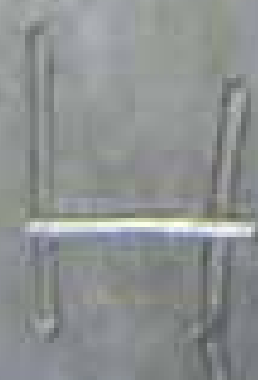




CS



Cm



HH



RT

X

TH













三三

22

1/2







134

3











9

9

9

f

4

4

2

XT

20













h



R



10

4

7

















